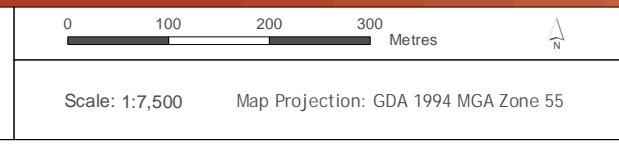


Legend

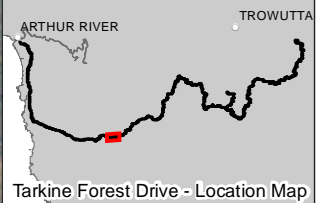
plant pathogen <i>Phytophthora cinnamomi</i>	EPBC Act listed threatened fauna
weeds (points)	australian grayling
weeds (lines)	tasmanian azure kingfisher
EPBC Act listed threatened flora (point)	giant freshwater crayfish
arthur river greenhood (Avoided)	marrawah skipper
arthur river greenhood (NOT Avoided)	tasmanian masked owl
large golden moths (Avoided)	spotted-tailed quoll
leafy greenhood (Avoided)	tasmanian devil (sighting)
northern leek-orchid (Avoided)	wedge-tailed eagle
shortspike midge-orchid (Avoided)	white-bellied sea-eagle
western leek-orchid (Avoided)	tasmanian devil (scat)
windswept spider-orchid (Avoided)	Tarkine Forest Drive - proposed works
EPBC Act listed threatened flora (polygon)	repair existing sealed road
arthur river greenhood (Avoided)	seal the road
	seal and widen the road
	road batters (widening)
	culvert replacements
	bridge replacements
	tourism infrastructure works
	sealing aggregate areas
	construction exclusion zones

Data sources:
 Base image by TASMAR (C) State of Tasmania
 Base data from The LIST (C) State of Tasmania
 Design data from pitt&sherry
 Environmental data from North Barker and NVA (C) State of Tasmania
 Map produced by pitt&sherry Date: 29/05/2012
 Map ref: HB09080_H033_AppA_MapSeries_12P_RevG



Note:
 Aerial imagery is indicative only.
 Aerial imagery may include background control point locations and fiducial marks which are extraneous to project data.

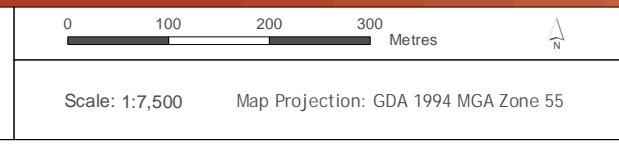
Fiducial marks (not for project analysis)
 Control points (not for project analysis)



Legend

plant pathogen <i>Phytophthora cinnamomi</i>	EPBC Act listed threatened fauna
weeds (points)	australian grayling
weeds (lines)	tasmanian azure kingfisher
EPBC Act listed threatened flora (point)	giant freshwater crayfish
arthur river greenhood (Avoided)	marrawah skipper
arthur river greenhood (NOT Avoided)	tasmanian masked owl
large golden moths (Avoided)	spotted-tailed quoll
leafy greenhood (Avoided)	tasmanian devil (sighting)
northern leek-orchid (Avoided)	wedge-tailed eagle
shortspike midge-orchid (Avoided)	white-bellied sea-eagle
western leek-orchid (Avoided)	tasmanian devil (scat)
windswept spider-orchid (Avoided)	Tarkine Forest Drive - proposed works
EPBC Act listed threatened flora (polygon)	repair existing sealed road
arthur river greenhood (Avoided)	seal the road
	seal and widen the road
	road batters (widening)
	culvert replacements
	bridge replacements
	tourism infrastructure works
	sealing aggregate areas
	construction exclusion zones

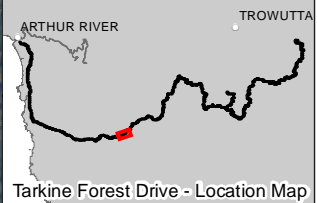
Data sources:
 Base image by TASMAR (C) State of Tasmania
 Base data from The LIST (C) State of Tasmania
 Design data from pitt&sherry
 Environmental data from North Barker and NVA (C) State of Tasmania
 Map produced by pitt&sherry Date: 29/05/2012
 Map ref: HB09080_H033_AppA_MapSeries_12P_RevG



Note:
 Aerial imagery is indicative only.
 Aerial imagery may include background control point locations and fiducial marks which are extraneous to project data.

Fiducial marks (not for project analysis)

Control points (not for project analysis)



Legend

plant pathogen <i>Phytophthora cinnamomi</i>	EPBC Act listed threatened fauna
weeds (points)	australian grayling
weeds (lines)	tasmanian azure kingfisher
EPBC Act listed threatened flora (point)	giant freshwater crayfish
arthur river greenhood (Avoided)	marrawah skipper
arthur river greenhood (NOT Avoided)	tasmanian masked owl
large golden moths (Avoided)	spotted-tailed quoll
leafy greenhood (Avoided)	tasmanian devil (sighting)
northern leek-orchid (Avoided)	wedge-tailed eagle
shortspike midge-orchid (Avoided)	white-bellied sea-eagle
western leek-orchid (Avoided)	tasmanian devil (scat)
windswept spider-orchid (Avoided)	Tarkine Forest Drive - proposed works
EPBC Act listed threatened flora (polygon)	repair existing sealed road
arthur river greenhood (Avoided)	seal the road
	seal and widen the road
	road batters (widening)
	culvert replacements
	bridge replacements
	tourism infrastructure works
	sealing aggregate areas
	construction exclusion zones



Data sources:
 Base image by TASMAP (C) State of Tasmania
 Base data from The LIST (C) State of Tasmania
 Design data from pitt&sherry
 Environmental data from North Barker and NVA (C) State of Tasmania
 Map produced by pitt&sherry Date: 29/05/2012
 Map ref: HB09080_H033_AppA_MapSeries_p17_12P_RevG

0 100 200 300 Metres

Scale: 1:7,500 Map Projection: GDA 1994 MGA Zone 55

Note:
 Aerial imagery is indicative only.
 Aerial imagery may include background control point locations and fiducial marks which are extraneous to project data.

Fiducial marks (not for project analysis)

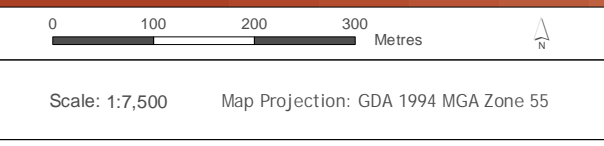
Control points (not for project analysis)



Legend	
plant pathogen <i>Phytophthora cinnamomi</i>	EPBC Act listed threatened fauna
weeds (points)	australian grayling
weeds (lines)	tasmanian azure kingfisher
EPBC Act listed threatened flora (point)	giant freshwater crayfish
arthur river greenhood (Avoided)	marrawah skipper
arthur river greenhood (NOT Avoided)	tasmanian masked owl
large golden moths (Avoided)	spotted-tailed quoll
leafy greenhood (Avoided)	tasmanian devil (sighting)
northern leek-orchid (Avoided)	wedge-tailed eagle
shortspike midge-orchid (Avoided)	white-bellied sea-eagle
western leek-orchid (Avoided)	tasmanian devil (scat)
windswept spider-orchid (Avoided)	Tarkine Forest Drive - proposed works
EPBC Act listed threatened flora (polygon)	repair existing sealed road
arthur river greenhood (Avoided)	seal the road
	seal and widen the road
	road batters (widening)
	culvert replacements
	bridge replacements
	tourism infrastructure works
	sealing aggregate areas
	construction exclusion zones



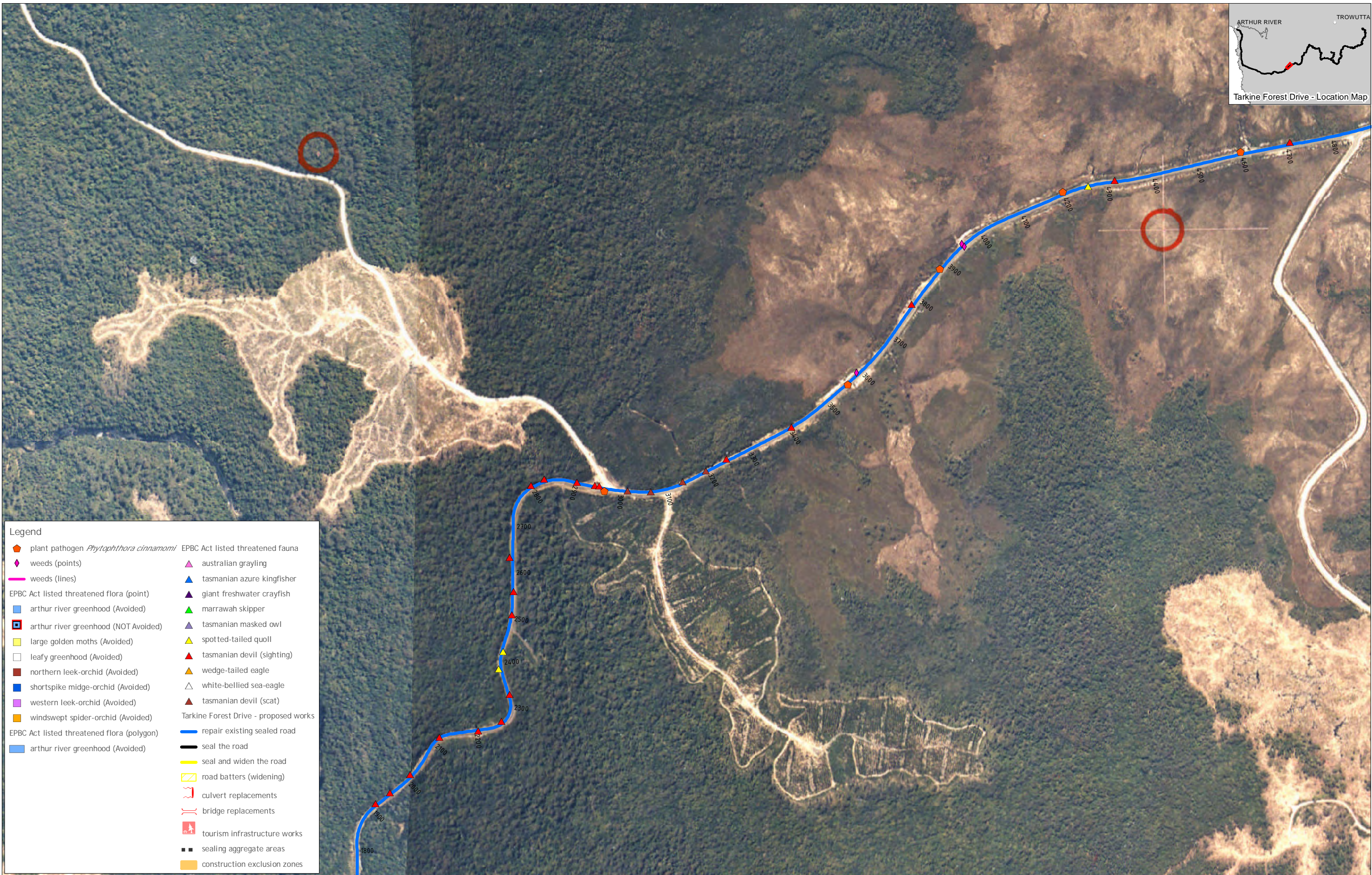
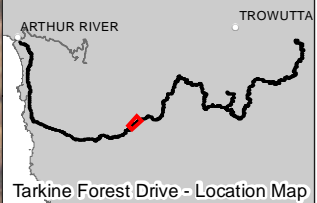
Data sources:
 Base image by TASMAR (C) State of Tasmania
 Base data from The LIST (C) State of Tasmania
 Design data from pitt&sherry
 Environmental data from North Barker and NVA (C) State of Tasmania
 Map produced by pitt&sherry Date: 29/05/2012
 Map ref: HB09080_H033_AppA_MapSeries_p18_12P_RevG



Note:
 Aerial imagery is indicative only.
 Aerial imagery may include background control point locations and fiducial marks which are extraneous to project data.

Fiducial marks (not for project analysis)

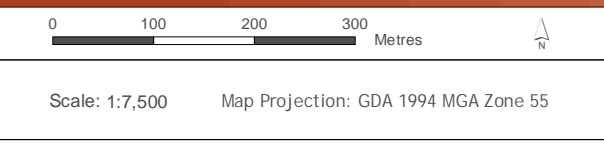
Control points (not for project analysis)



Legend

plant pathogen <i>Phytophthora cinnamomi</i>	EPBC Act listed threatened fauna
weeds (points)	australian grayling
weeds (lines)	tasmanian azure kingfisher
EPBC Act listed threatened flora (point)	giant freshwater crayfish
arthur river greenhood (Avoided)	marrawah skipper
arthur river greenhood (NOT Avoided)	tasmanian masked owl
large golden moths (Avoided)	spotted-tailed quoll
leafy greenhood (Avoided)	tasmanian devil (sighting)
northern leek-orchid (Avoided)	wedge-tailed eagle
shortspike midge-orchid (Avoided)	white-bellied sea-eagle
western leek-orchid (Avoided)	tasmanian devil (scat)
windswept spider-orchid (Avoided)	Tarkine Forest Drive - proposed works
EPBC Act listed threatened flora (polygon)	repair existing sealed road
arthur river greenhood (Avoided)	seal the road
	seal and widen the road
	road batters (widening)
	culvert replacements
	bridge replacements
	tourism infrastructure works
	sealing aggregate areas
	construction exclusion zones

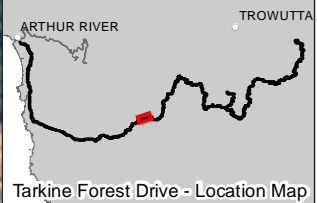
Data sources:
 Base image by TASMAT (C) State of Tasmania
 Base data from The LIST (C) State of Tasmania
 Design data from pitt&sherry
 Environmental data from North Barker and NVA (C) State of Tasmania
 Map produced by pitt&sherry Date: 29/05/2012
 Map ref: HB09080_H033_AppA_MapSeries_12P_RevG



Note:
 Aerial imagery is indicative only.
 Aerial imagery may include background control point locations and fiducial marks which are extraneous to project data.

Fiducial marks (not for project analysis)

Control points (not for project analysis)

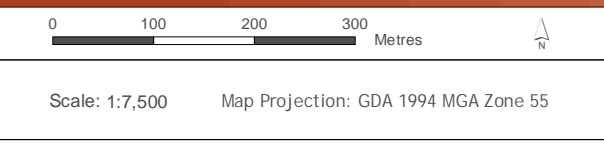


Legend

<ul style="list-style-type: none"> plant pathogen <i>Phytophthora cinnamomi</i> weeds (points) weeds (lines) EPBC Act listed threatened flora (point) arthur river greenhood (Avoided) arthur river greenhood (NOT Avoided) large golden moths (Avoided) leafy greenhood (Avoided) northern leek-orchid (Avoided) shortspike midge-orchid (Avoided) western leek-orchid (Avoided) windswept spider-orchid (Avoided) EPBC Act listed threatened flora (polygon) arthur river greenhood (Avoided) 	<ul style="list-style-type: none"> EPBC Act listed threatened fauna australian grayling tasmanian azure kingfisher giant freshwater crayfish marrawah skipper tasmanian masked owl spotted-tailed quoll tasmanian devil (sighting) wedge-tailed eagle white-bellied sea-eagle tasmanian devil (scat) Tarkine Forest Drive - proposed works repair existing sealed road seal the road seal and widen the road road batters (widening) culvert replacements bridge replacements tourism infrastructure works sealing aggregate areas construction exclusion zones
---	--

PG pitt&sherry

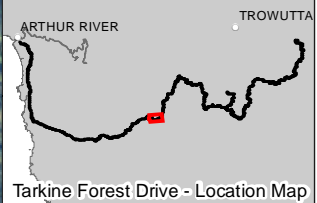
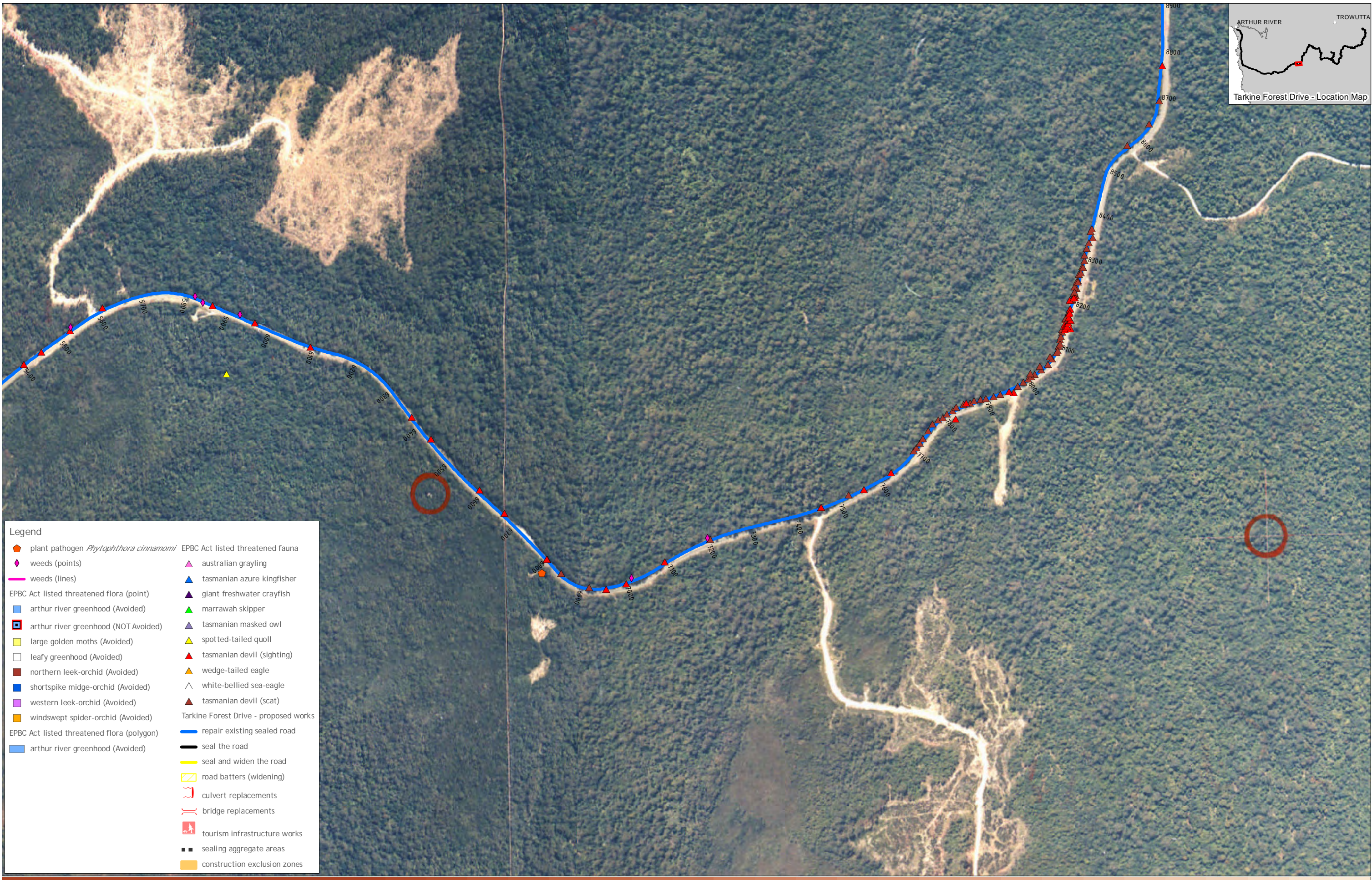
Data sources:
 Base image by TASMAR (C) State of Tasmania
 Base data from The LIST (C) State of Tasmania
 Design data from pitt&sherry
 Environmental data from North Barker and NVA (C) State of Tasmania
 Map produced by pitt&sherry Date: 29/05/2012
 Map ref: HB09080_H033_AppA_MapSeries_12P_RevG



Note:
 Aerial imagery is indicative only.
 Aerial imagery may include background control point locations and fiducial marks which are extraneous to project data.

Fiducial marks (not for project analysis)

Control points (not for project analysis)



Legend

<ul style="list-style-type: none"> plant pathogen <i>Phytophthora cinnamomi</i> weeds (points) weeds (lines) EPBC Act listed threatened flora (point) arthur river greenhood (Avoided) arthur river greenhood (NOT Avoided) large golden moths (Avoided) leafy greenhood (Avoided) northern leek-orchid (Avoided) shortspike midge-orchid (Avoided) western leek-orchid (Avoided) windswept spider-orchid (Avoided) EPBC Act listed threatened flora (polygon) arthur river greenhood (Avoided) 	<ul style="list-style-type: none"> EPBC Act listed threatened fauna australian grayling tasmanian azure kingfisher giant freshwater crayfish marrawah skipper tasmanian masked owl spotted-tailed quoll tasmanian devil (sighting) wedge-tailed eagle white-bellied sea-eagle tasmanian devil (scat) Tarkine Forest Drive - proposed works repair existing sealed road seal the road seal and widen the road road batters (widening) culvert replacements bridge replacements tourism infrastructure works sealing aggregate areas construction exclusion zones
---	---

pitt&sherry
 Data sources:
 Base image by TASMAR (C) State of Tasmania
 Base data from The LIST (C) State of Tasmania
 Design data from pitt&sherry
 Environmental data from North Barker and NVA (C) State of Tasmania
 Map produced by pitt&sherry Date: 29/05/2012
 Map ref: HB09080_H033_AppA_MapSeries_12P_RevG

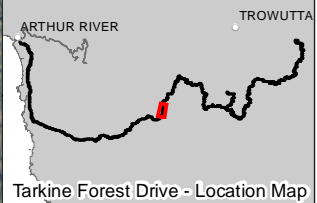
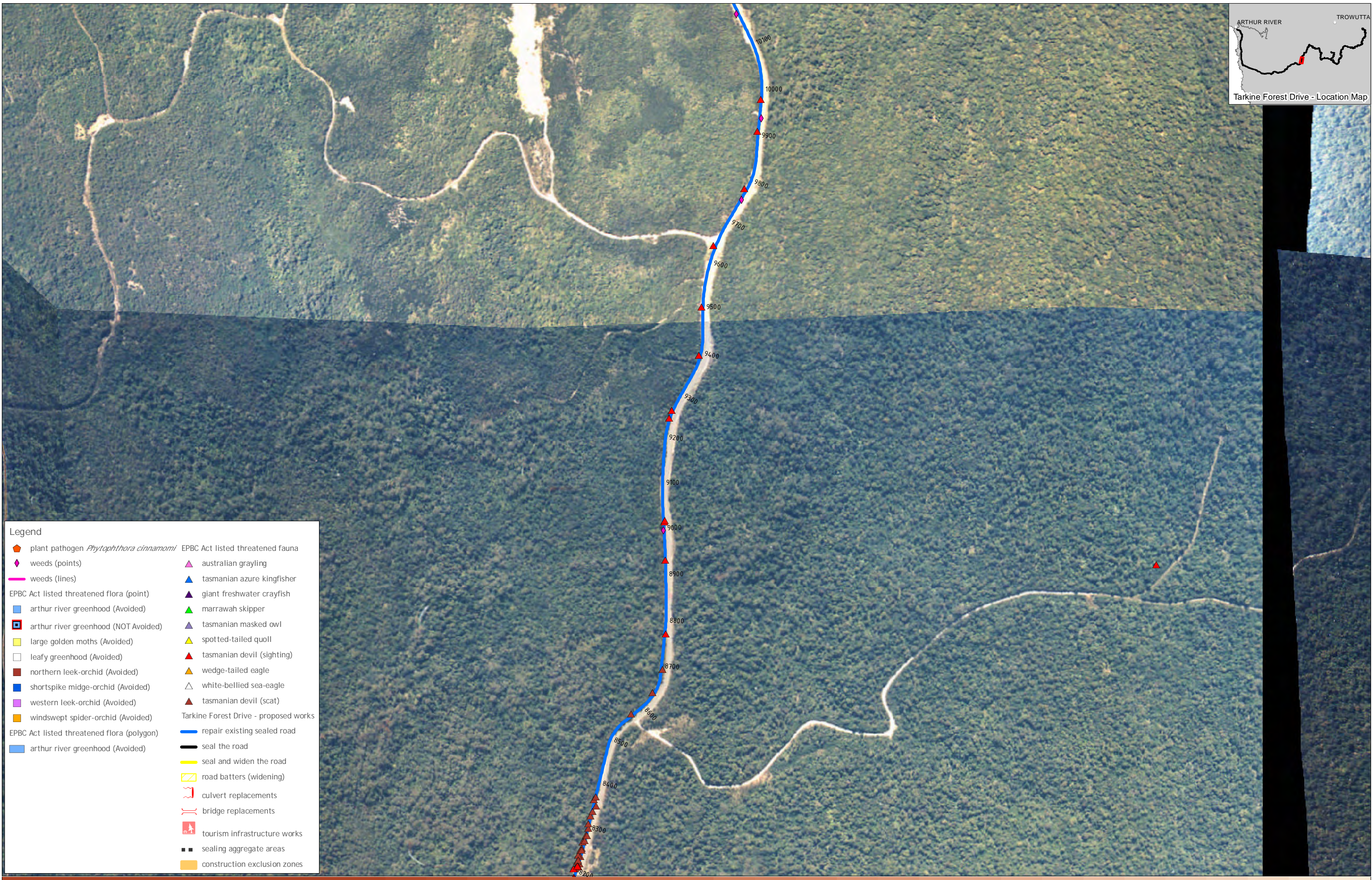
0 100 200 300 Metres
 Scale: 1:7,500 Map Projection: GDA 1994 MGA Zone 55

Note:
 Aerial imagery is indicative only.
 Aerial imagery may include background control point locations and fiducial marks which are extraneous to project data.

Fiducial marks (not for project analysis)
 Control points (not for project analysis)

DEPARTMENT OF INFRASTRUCTURE, ENERGY & RESOURCES
 TARKINE FOREST DRIVE MAP SERIES
 DRAFT 1

APPENDIX A
 MAP 21 of 45 - SEGMENT E



Legend

plant pathogen <i>Phytophthora cinnamomi</i>	EPBC Act listed threatened fauna
weeds (points)	australian grayling
weeds (lines)	tasmanian azure kingfisher
EPBC Act listed threatened flora (point)	giant freshwater crayfish
arthur river greenhood (Avoided)	marrawah skipper
arthur river greenhood (NOT Avoided)	tasmanian masked owl
large golden moths (Avoided)	spotted-tailed quoll
leafy greenhood (Avoided)	tasmanian devil (sighting)
northern leek-orchid (Avoided)	wedge-tailed eagle
shortspike midge-orchid (Avoided)	white-bellied sea-eagle
western leek-orchid (Avoided)	tasmanian devil (scat)
windswept spider-orchid (Avoided)	Tarkine Forest Drive - proposed works
EPBC Act listed threatened flora (polygon)	repair existing sealed road
arthur river greenhood (Avoided)	seal the road
	seal and widen the road
	road batters (widening)
	culvert replacements
	bridge replacements
	tourism infrastructure works
	sealing aggregate areas
	construction exclusion zones

Data sources:
 Base image by TASMAT (C) State of Tasmania
 Base data from The LIST (C) State of Tasmania
 Design data from pitt&sherry
 Environmental data from North Barker and NVA (C) State of Tasmania
 Map produced by pitt&sherry Date: 29/05/2012
 Map ref: HB09080_H033_AppA_MapSeries_12P_RevG

0 100 200 300 Metres

Scale: 1:7,500 Map Projection: GDA 1994 MGA Zone 55

Note:
 Aerial imagery is indicative only.
 Aerial imagery may include background control point locations and fiducial marks which are extraneous to project data.

Fiducial marks (not for project analysis)

Control points (not for project analysis)

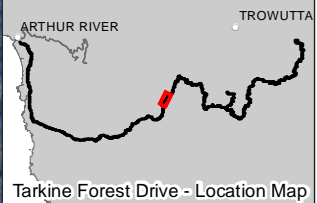
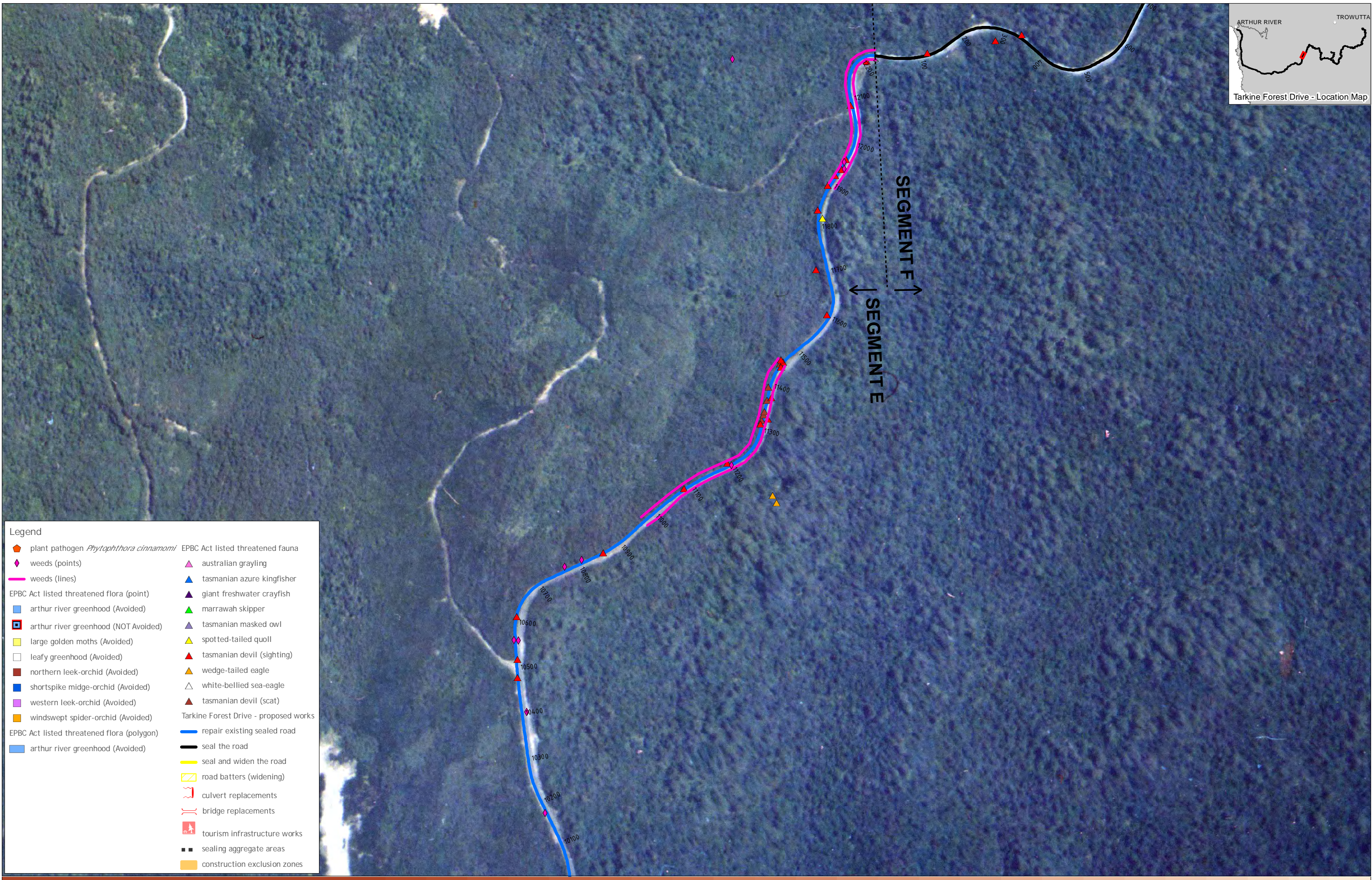
DEPARTMENT OF INFRASTRUCTURE, ENERGY & RESOURCES

TARKINE FOREST DRIVE MAP SERIES

DRAFT 1

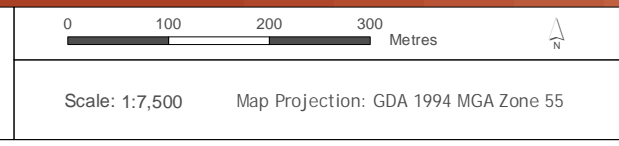
APPENDIX A

MAP 22 of 45 - SEGMENT E



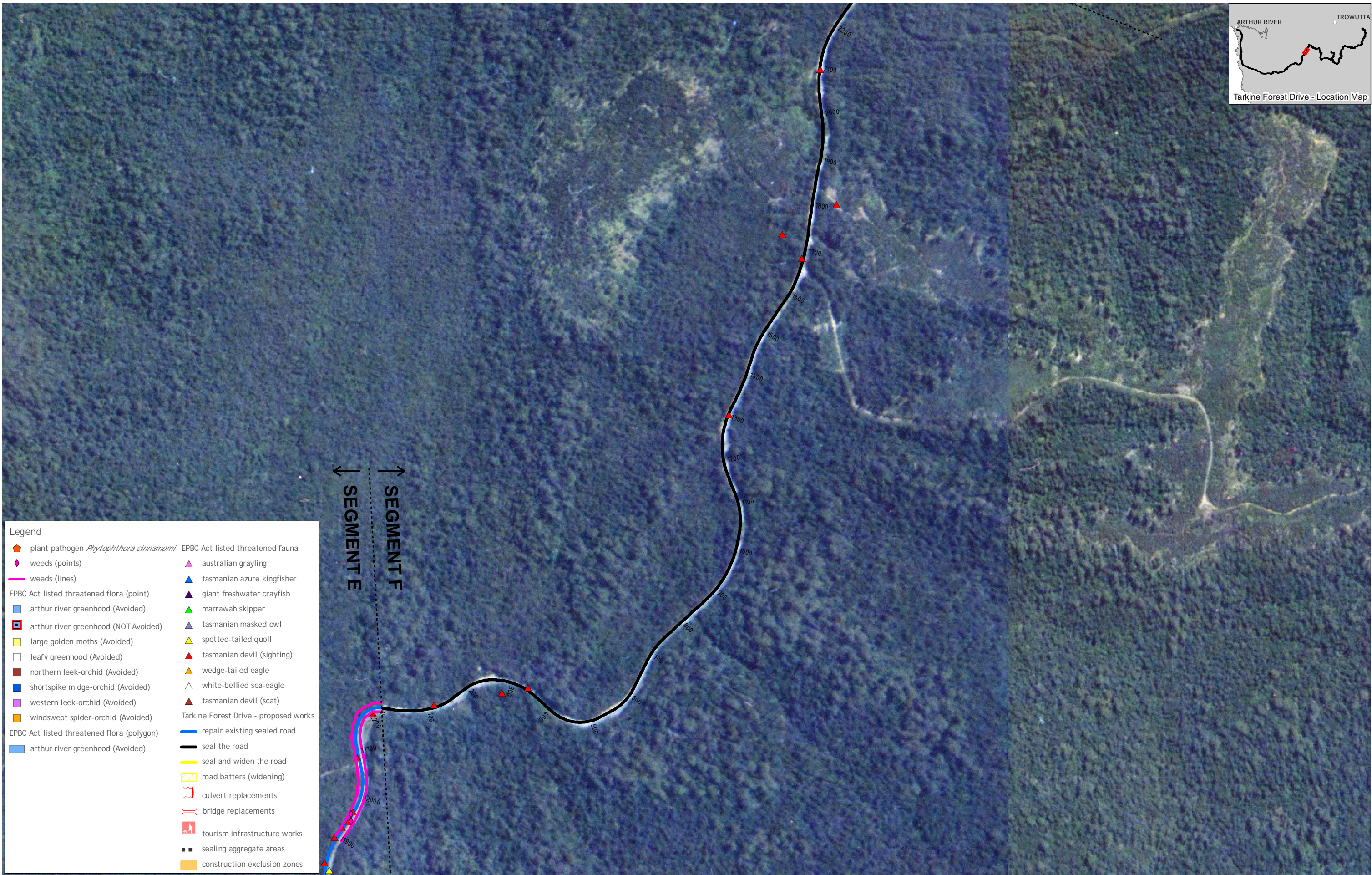
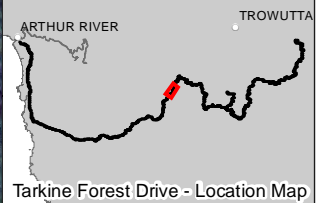
- Legend**
- ◆ plant pathogen *Phytophthora cinnamomi*
 - ◆ weeds (points)
 - weeds (lines)
 - EPBC Act listed threatened flora (point)
 - arthur river greenhood (Avoided)
 - arthur river greenhood (NOT Avoided)
 - large golden moths (Avoided)
 - leafy greenhood (Avoided)
 - northern leek-orchid (Avoided)
 - shortspike midge-orchid (Avoided)
 - western leek-orchid (Avoided)
 - windswept spider-orchid (Avoided)
 - EPBC Act listed threatened flora (polygon)
 - arthur river greenhood (Avoided)
 - ▲ australian grayling
 - ▲ tasmanian azure kingfisher
 - ▲ giant freshwater crayfish
 - ▲ marrawah skipper
 - ▲ tasmanian masked owl
 - ▲ spotted-tailed quoll
 - ▲ tasmanian devil (sighting)
 - ▲ wedge-tailed eagle
 - ▲ white-bellied sea-eagle
 - ▲ tasmanian devil (scat)
 - Tarkine Forest Drive - proposed works
 - repair existing sealed road
 - seal the road
 - seal and widen the road
 - ▨ road batters (widening)
 - culvert replacements
 - bridge replacements
 - tourism infrastructure works
 - sealing aggregate areas
 - construction exclusion zones

Data sources:
 Base image by TASMAR (C) State of Tasmania
 Base data from The LIST (C) State of Tasmania
 Design data from pitt&sherry
 Environmental data from North Barker and NVA (C) State of Tasmania
 Map produced by pitt&sherry Date: 29/05/2012
 Map ref: HB09080_H033_AppA_MapSeries_12P_RevG



Note:
 Aerial imagery is indicative only.
 Aerial imagery may include background control point locations and fiducial marks which are extraneous to project data.

Fiducial marks (not for project analysis) ■
 Control points (not for project analysis) ■



Legend

<ul style="list-style-type: none"> plant pathogen <i>Phytophthora cinnamomi</i> weeds (points) weeds (lines) EPBC Act listed threatened flora (point) arthur river greenhood (Avoided) arthur river greenhood (NOT Avoided) large golden moths (Avoided) leafy greenhood (Avoided) northern leek-orchid (Avoided) shortspike midge-orchid (Avoided) western leek-orchid (Avoided) windswept spider-orchid (Avoided) EPBC Act listed threatened flora (polygon) arthur river greenhood (Avoided) 	<ul style="list-style-type: none"> EPBC Act listed threatened fauna australian grayling tasmanian azure kingfisher giant freshwater crayfish marrawah skipper tasmanian masked owl spotted-tailed quoll tasmanian devil (sighting) wedge-tailed eagle white-bellied sea-eagle tasmanian devil (scat) Tarkine Forest Drive - proposed works repair existing sealed road seal the road seal and widen the road road batters (widening) culvert replacements bridge replacements tourism infrastructure works sealing aggregate areas construction exclusion zones
---	--

pitt&sherry
 Data sources:
 Base image by TASMAR (C) State of Tasmania
 Base data from The LIST (C) State of Tasmania
 Design data from pitt&sherry
 Environmental data from North Barker and NVA (C) State of Tasmania
 Map produced by pitt&sherry Date: 29/05/2012
 Map ref: HB09080_H033_AppA_MapSeries_12P_RevG

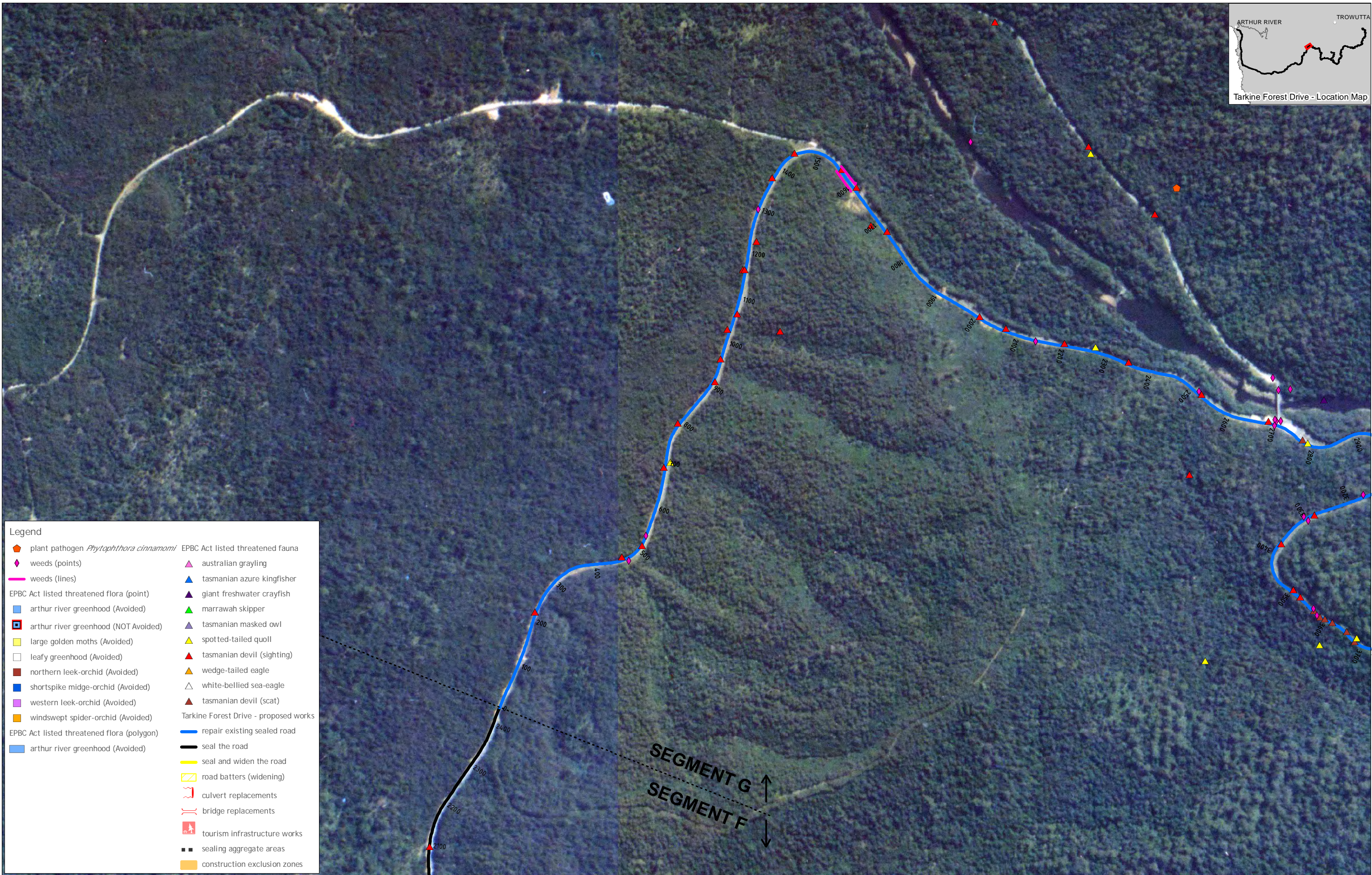
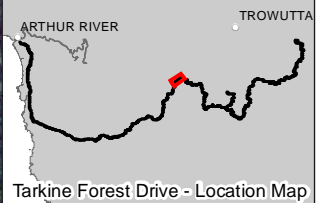
0 100 200 300 Metres
 Scale: 1:7,500 Map Projection: GDA 1994 MGA Zone 55

Note:
 Aerial imagery is indicative only.
 Aerial imagery may include background control point locations and fiducial marks which are extraneous to project data.

Fiducial marks (not for project analysis) [Symbol]
 Control points (not for project analysis) [Symbol]

DEPARTMENT OF INFRASTRUCTURE, ENERGY & RESOURCES
 TARKINE FOREST DRIVE MAP SERIES
 DRAFT 1

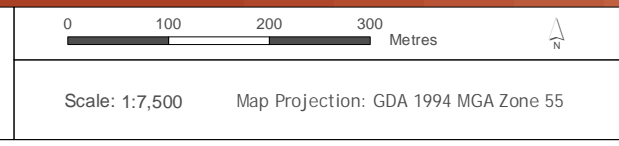
APPENDIX A
 MAP 24 of 45 - SEGMENT E/F



Legend

plant pathogen <i>Phytophthora cinnamomi</i>	EPBC Act listed threatened fauna
weeds (points)	australian grayling
weeds (lines)	tasmanian azure kingfisher
EPBC Act listed threatened flora (point)	giant freshwater crayfish
arthur river greenhood (Avoided)	marrawah skipper
arthur river greenhood (NOT Avoided)	tasmanian masked owl
large golden moths (Avoided)	spotted-tailed quoll
leafy greenhood (Avoided)	tasmanian devil (sighting)
northern leek-orchid (Avoided)	wedge-tailed eagle
shortspike midge-orchid (Avoided)	white-bellied sea-eagle
western leek-orchid (Avoided)	tasmanian devil (scat)
windswept spider-orchid (Avoided)	Tarkine Forest Drive - proposed works
EPBC Act listed threatened flora (polygon)	repair existing sealed road
arthur river greenhood (Avoided)	seal the road
	seal and widen the road
	road batters (widening)
	culvert replacements
	bridge replacements
	tourism infrastructure works
	sealing aggregate areas
	construction exclusion zones

Data sources:
 Base image by TASMAR (C) State of Tasmania
 Base data from The LIST (C) State of Tasmania
 Design data from pitt&sherry
 Environmental data from North Barker and NVA (C) State of Tasmania
 Map produced by pitt&sherry Date: 29/05/2012
 Map ref: HB09080_H033_AppA_MapSeries_12P_RevG



Note:
 Aerial imagery is indicative only.
 Aerial imagery may include background control point locations and fiducial marks which are extraneous to project data.

Fiducial marks (not for project analysis)

Control points (not for project analysis)