

# NATION BUILDING 2: OVERVIEW OF TASMANIAN GOVERNMENT SUBMISSION

Norm McIlfattrick  
Department of Infrastructure,  
Energy and Resources

## Overview of Nation Building 2

- Australian Government's key transport funding program for all states
- Overarching objective to improve productivity
- 2014-15 to 2018-19
- Detailed submissions and economic analysis required for all projects – challenge for Tasmania
- Two assessment processes:
  1. Infrastructure Australia – projects over \$100M
  2. Department of Infrastructure and Transport – all other projects

# Key themes

- Four themes, each with three sub-programmes:

## **1. Moving Freight:**

- *Interstate Freight, Local Freight, Heavy vehicle and rail freight productivity*

## **2. Connecting People:**

- *Connecting Cities, Urban Living, Pinch Points*

## **3. Safety:**

- *Black Spot, Roads to Recovery, Network Regeneration*

## **4. Innovation:**

- *Smart Infrastructure, Planning and Research, Evaluation and Compliance*

# Tasmanian Government submission

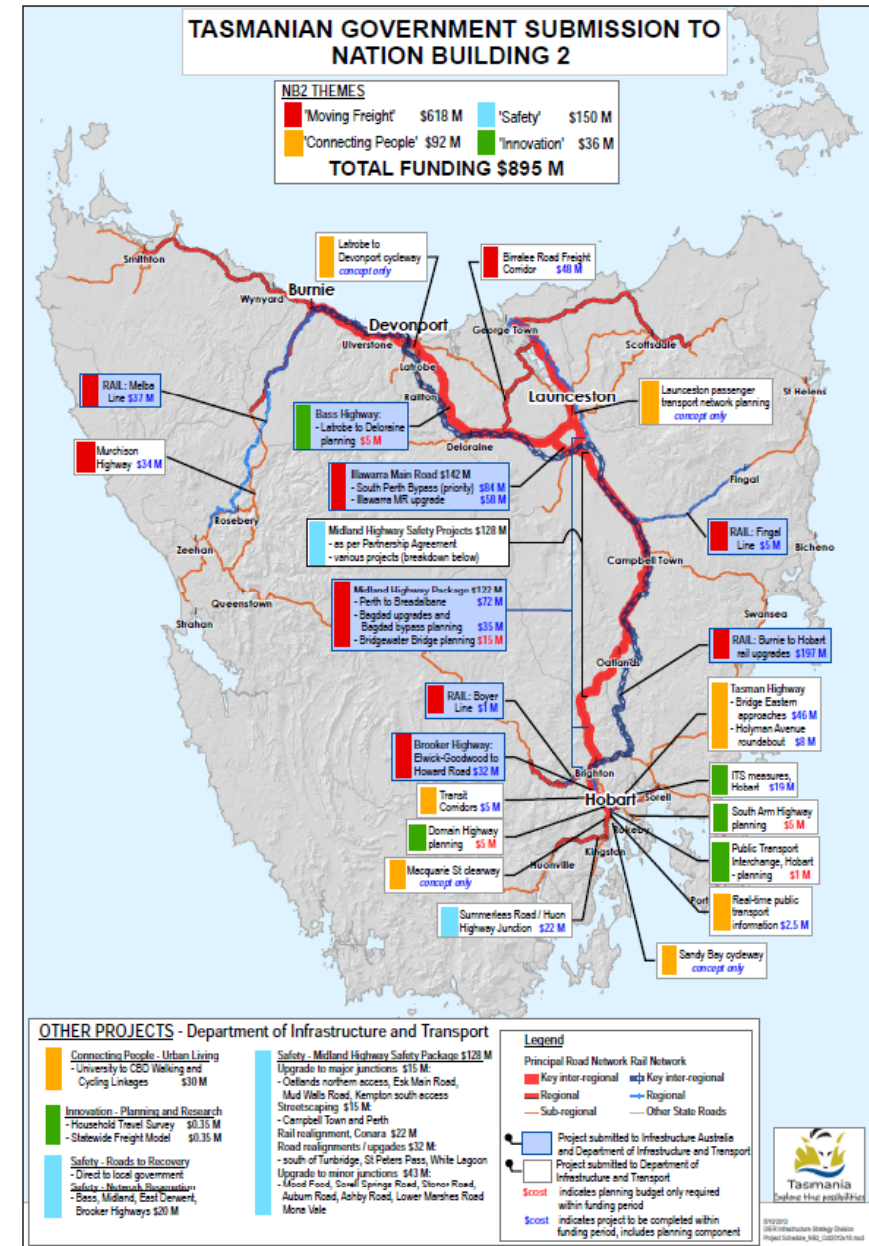
- \$895 million
- 22 submissions + 4 'concept' submissions

## Infrastructure Australia (\$546M)

- Focus on Burnie to Hobart freight corridor, including:
  - Brooker Highway
  - South Perth Bypass
  - New Bridgewater Bridge planning
  - Rail upgrades

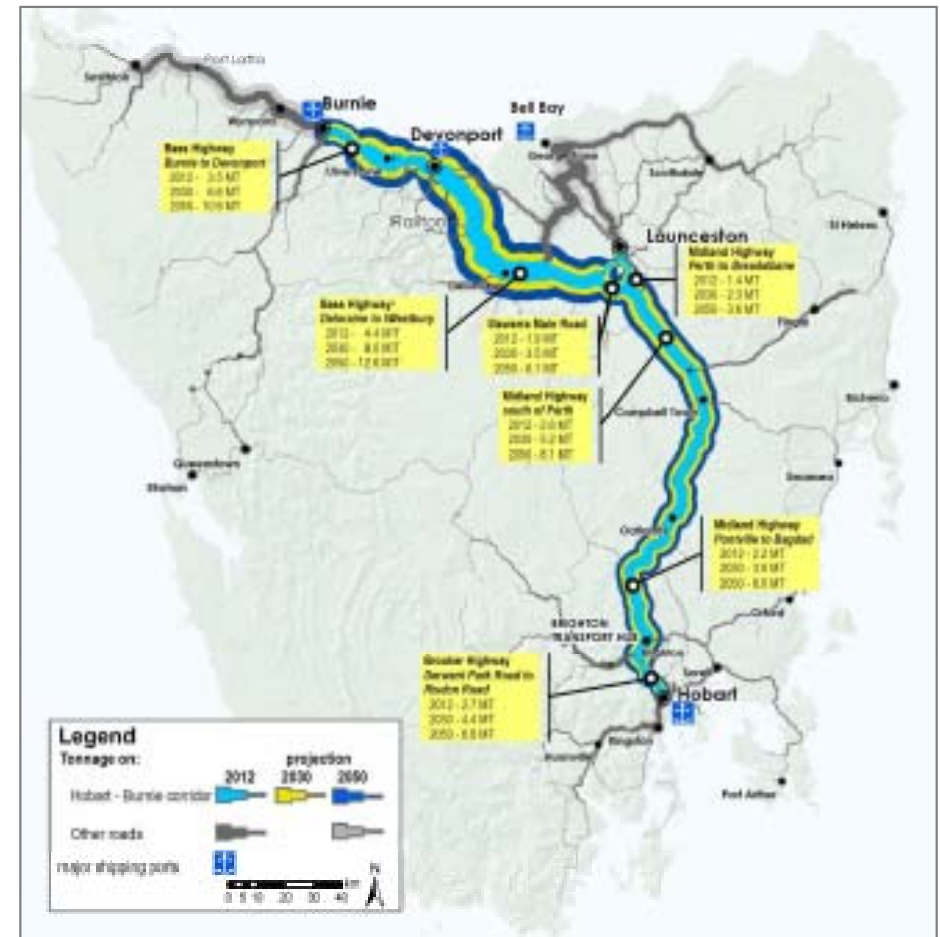
## DOIT (\$349M)

- All other projects, including:
  - Midland Highway Safety package
  - Upgrades – Birralee Main Road, Murchison Highway



# 1. Moving Freight

- Focus on Burnie to Hobart corridor
  - Major freight route by tonnage and volumes
  - Connects major ports, industrial and population centres, Brighton Transport Hub
- \$618M total bid:
  - Rail Revitalisation Package (\$240M)
  - Illawarra Main Road: (\$142M)
  - Perth to Breadalbane duplication (\$72M)
  - Bagdad Upgrades/future planning (\$35M)
  - New Bridgewater Bridge (\$15M)
  - Brooker Highway (Elwick-Goodwood to Howard Road) (\$32M)
  - Birralelee Main Road (\$48M)
  - Murchison Highway (\$34M)



# Rail Revitalisation Program (\$240M)

- Major submission from TasRail
- Concrete re-sleepering and relay life-expired rail track, focused mainly on the Burnie to Hobart lines (\$197M)
- Relay life-expired rail on the Melba, Fingal and Derwent Valley lines

# Illawarra Main Road (\$142M)

- ~1.9M tonnes of freight/yr
- Two projects:
  1. South Perth Bypass (\$84M)
  2. General upgrades, Illawarra Main Road (\$58M)

## South Perth Bypass

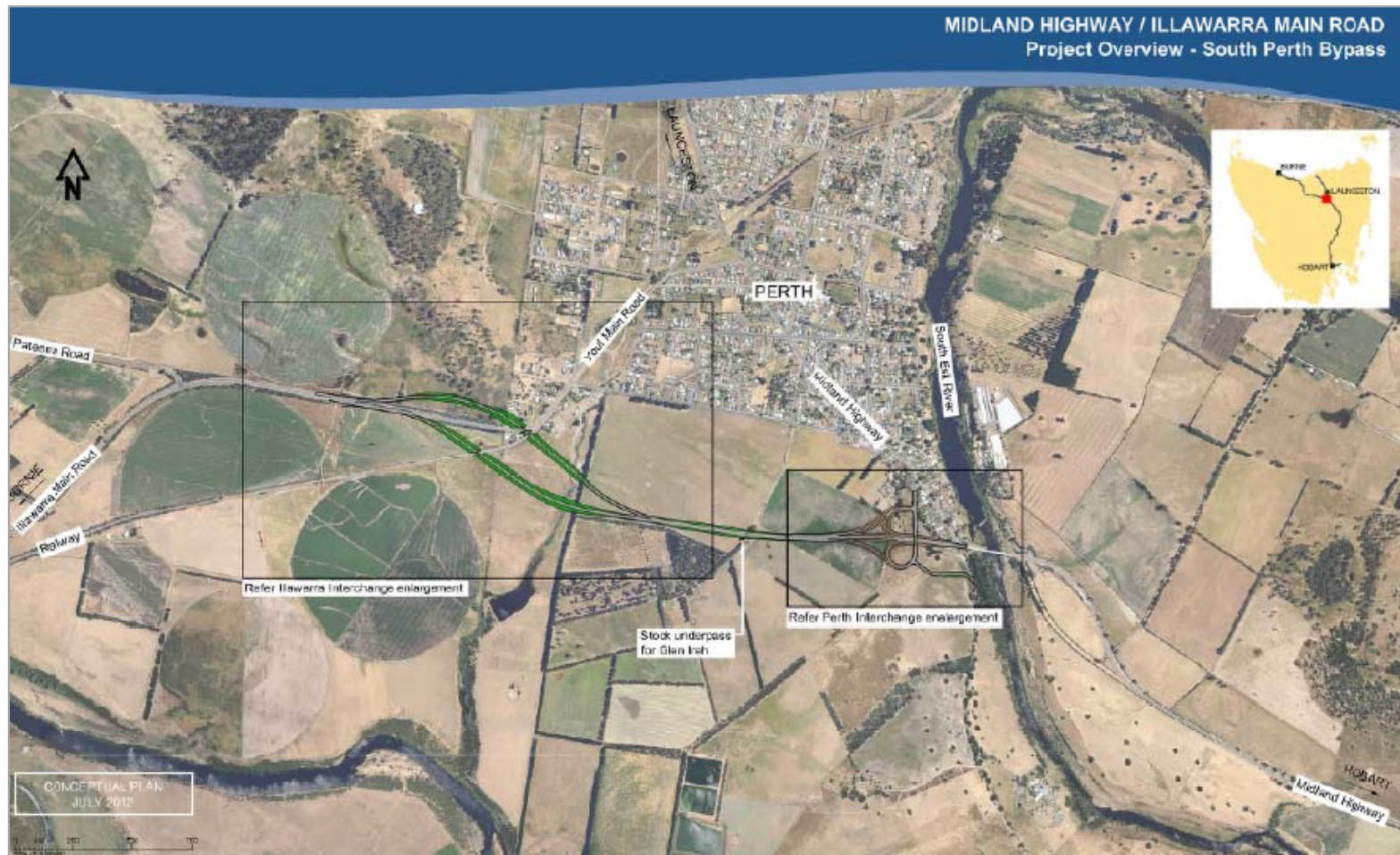
- Bypass of southern Perth (Midland Highway to Illawarra Main Road)
- Removes heavy vehicles from Perth for north-west/south freight movements

## Illawarra Main Road Upgrades

- General upgrades west of bypass to Bass Highway



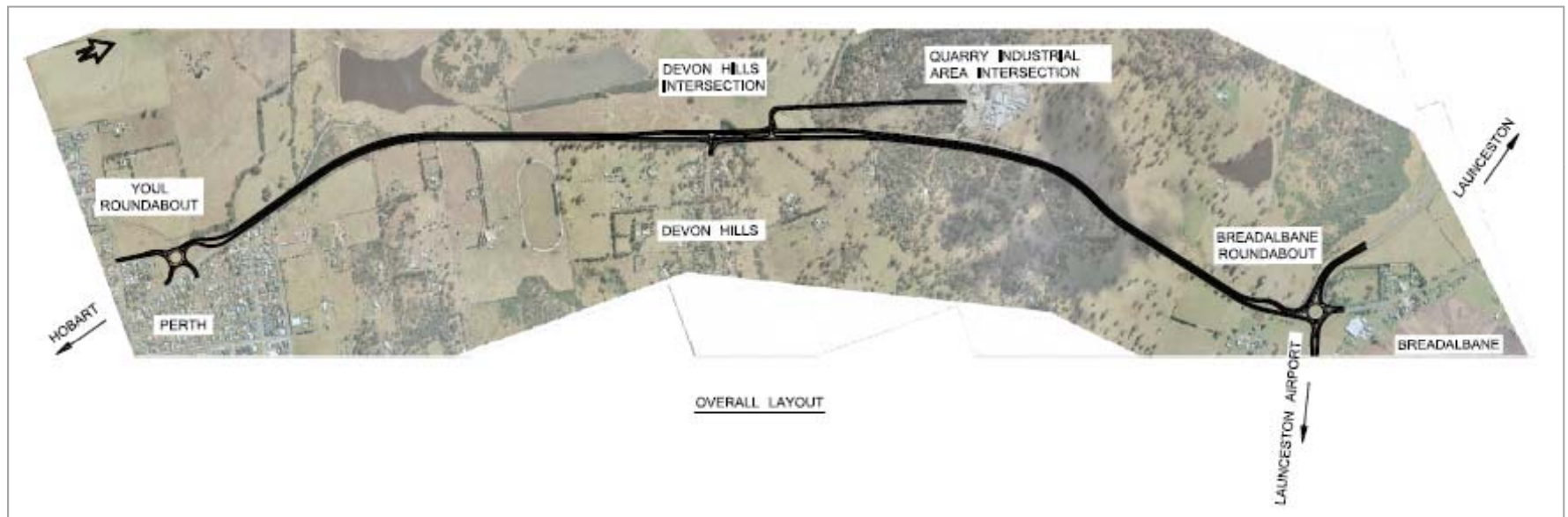
# South Perth Bypass





# Perth to Breadalbane duplication (\$72M)

- 4 lanes between Perth and Breadalbane
- New roundabout north of Perth; new access arrangements at Devon Hills



# **Bagdad Upgrades and Bagdad Bypass Planning (\$35M)**

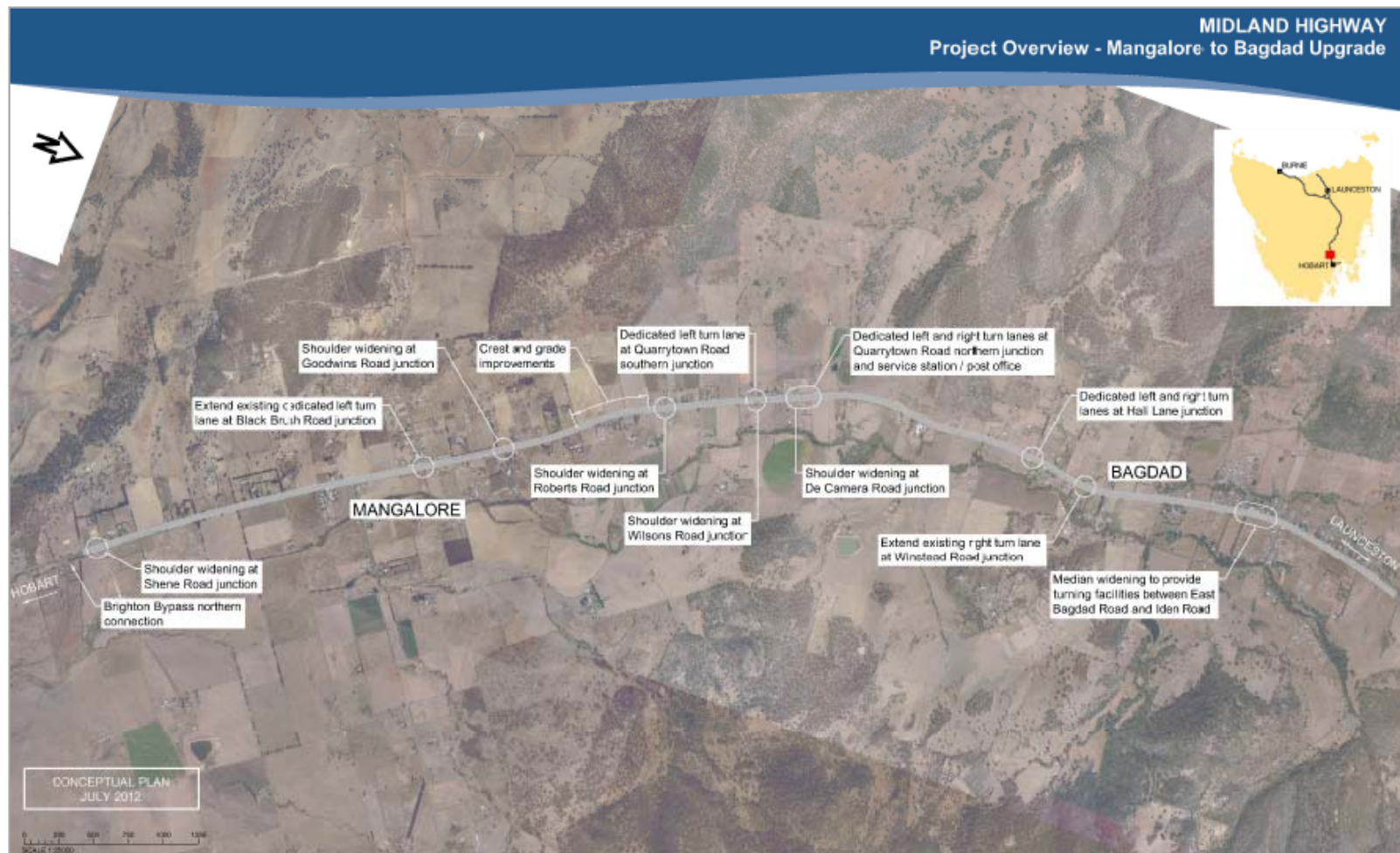
## **Interim upgrades (\$24M)**

- Interim, short-term upgrades ahead of a Bagdad Bypass
- Improve safety of turning movements and accesses, Bagdad to Mangalore

## **Final planning, Bagdad Bypass (\$11M)**

- Final planning and land acquisition to support future Bagdad Bypass

# Midland Highway - Bagdad Upgrades



# New Bridgewater Bridge (\$15M)

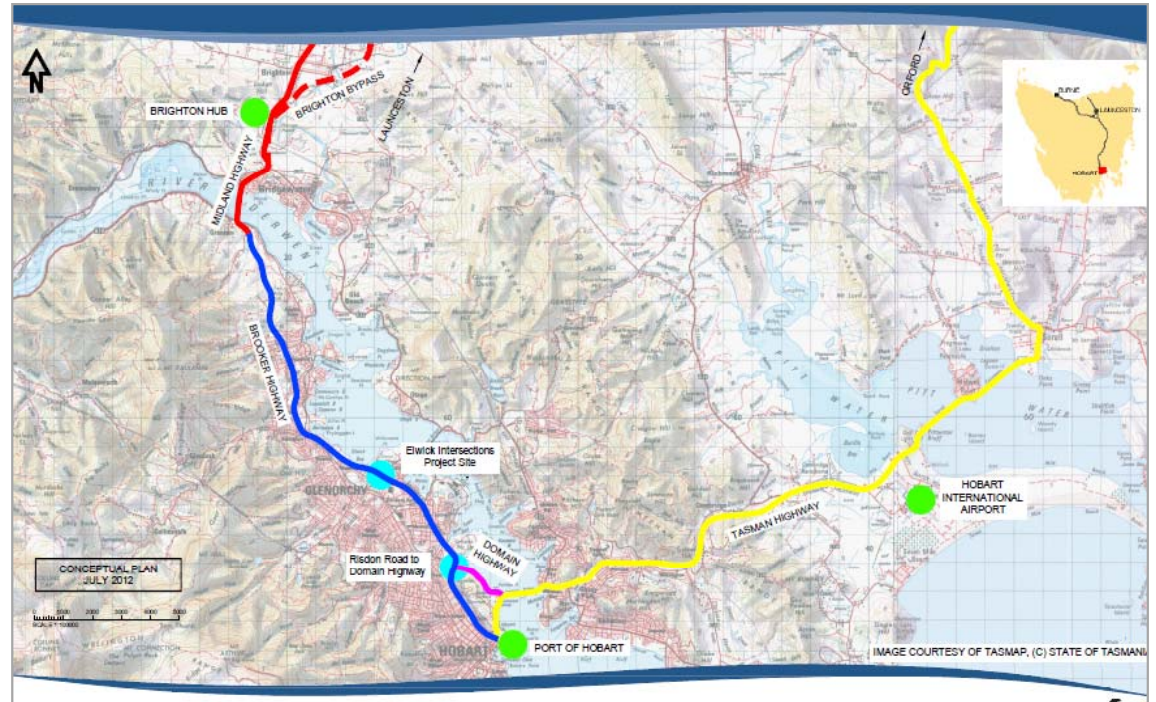
- Critical link in north-south supply chain and in urban Hobart
- Initial planning complete
- Additional funding to finalise design, planning and environmental assessments etc.
- Also land acquisition





# Brooker Highway upgrades (\$37M)

- One of Tasmania's highest tonnage (2.7M tonnes in 2012) and highest volume roads
- Focus on key sections where capacity constrained:
  1. Elwick-Goodwood to Howard Roads
  2. Domain Highway Interchange



## **Brooker Highway upgrades (\$37M)**

### **Elwick/Goodwood Roads to Howard Road (\$32M)**

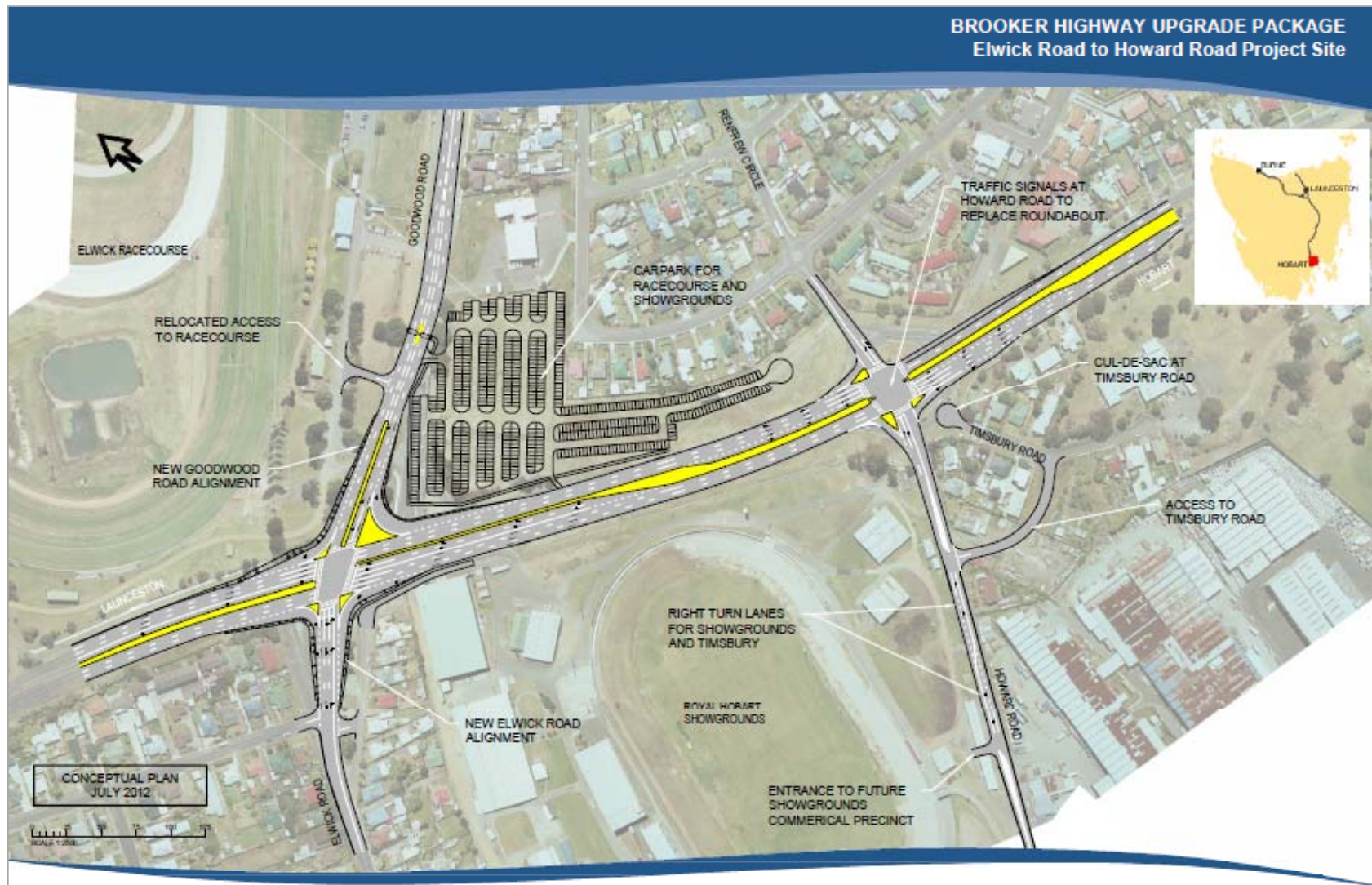
- Layout and proximity of junctions creates capacity and efficiency constraints
- \$32M to:
  - consolidate existing intersection at Goodwood and Elwick Roads
  - replace Howard Road roundabout with signals

### **Domain Highway Interchange (\$5M)**

- Traffic queuing; constraints with existing structure
- \$5M to investigate upgrade options



# Elwick/Goodwood to Howard Road upgrade



# **Birralee Main Road (\$48M) and Murchison Highway (\$34M) upgrades**

## **Birralee Main Road**

- Upgrades to ensure HPV compliance through to Frankford Road intersection
- Key link in the north-west/north-east freight route

## **Murchison Highway**

- Key route for mining freight and passenger movements to/from West Coast
- Extend existing upgrades north toward Cradle Mountain Development Road – focus on safety and HPV compliance

## 2. Connecting People (\$91.5M)

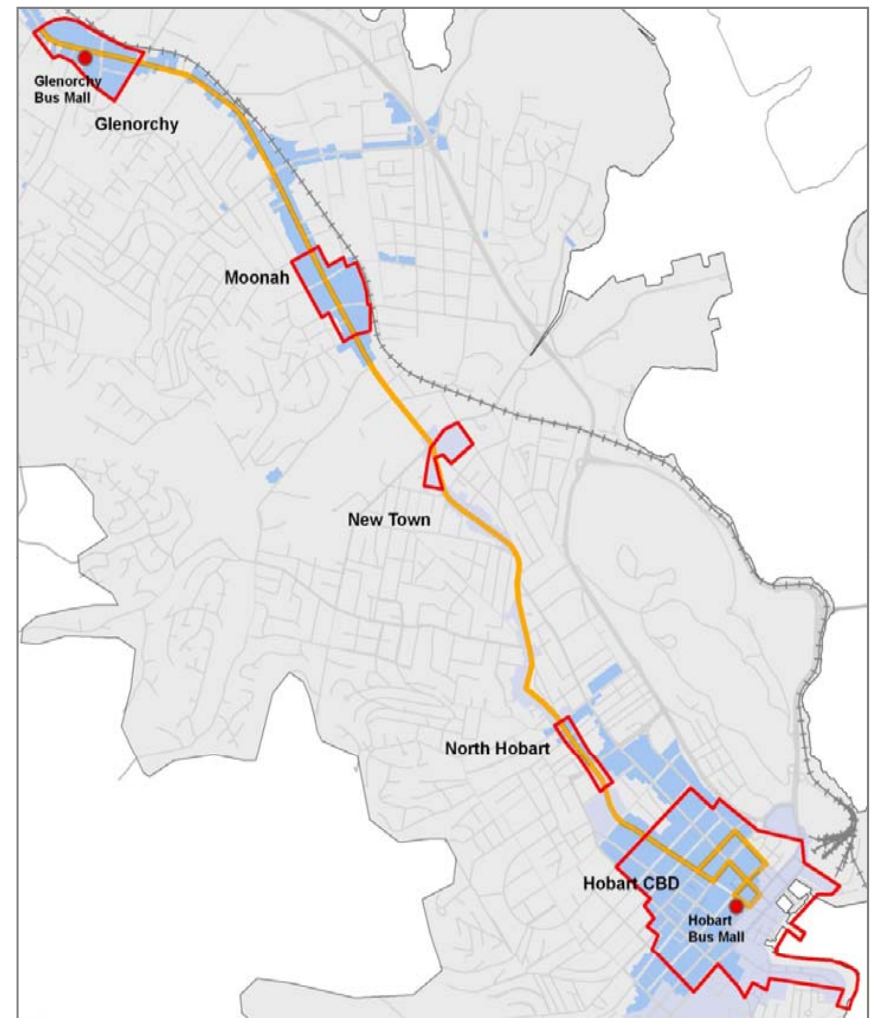
- Passenger-related projects
- Includes public transport and active transport for the first time
- Key projects:
  - Main Road Transit Corridor and Greater Hobart Transit Corridor Planning (\$5M)
  - Connecting Universities to their Communities (\$30M)
  - Tasman Highway – Tasman Bridge Eastern Approaches Upgrade (\$46M)
  - Tasman Highway/Holyman Avenue Roundabout Upgrade (\$8M)
  - Real-time Passenger Information (\$2.5M)
- Lower-cost projects, generally higher BCRs (over 1)

# Main Road Transit Corridor and Greater Hobart Transit Corridor Planning (\$5M)

- *Tasmanian Urban Passenger Transport Framework* identifies the importance of developing key public transport corridors.
- Transit corridors seek to co-ordinate public and active transport planning, with land-use planning decisions
- The Tasmanian Government has commenced the first of its Transit Corridor projects, focusing on the Main Road Corridor from Glenorchy to Hobart
- Main Road corridor: \$3M delivery
- Planning for other corridors: \$2M
  - Options include: Hobart CBD to Rosny/Shoreline; Hobart CBD to Southern Suburbs (Kingston, South Hobart); Hobart CBD to Sandy Bay (UTAS)

# Main Road Transit Corridor and Greater Hobart Transit Corridor Planning (\$5M)

- Main Road Infrastructure delivery:
  - Planning and delivery of short-term bus priority measures.
  - Planning and delivery of bus stop optimisation and upgrades.
  - Planning for medium-term bus priority measures in Hobart CBD.
  - Estimated Cost of work:\$3 million
  - BCR: 1.74





## Connecting Universities to Communities (\$29.9M)

- Proposal covers active transport projects in Hobart, Launceston and Burnie
- Objectives include to:
  - Create more sustainable communities by supporting the uptake of active transport.
  - Support a healthy, active student population, and ensure accessibility.
- Hobart: estimated cost \$23.3M
- Total BCR of 1.1



# Connecting Universities to Communities – Hobart cycling paths and walkways



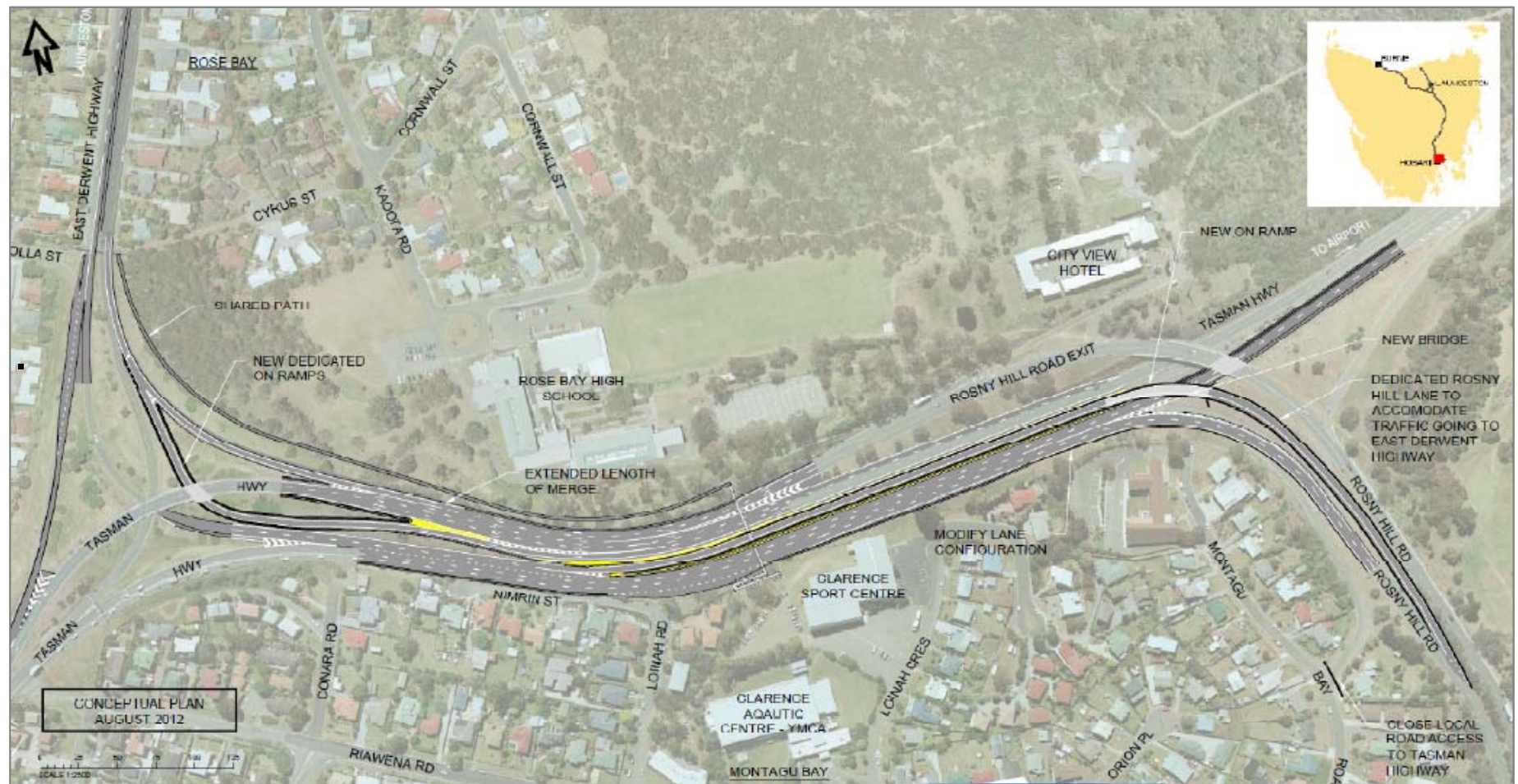
## Tasman Highway – Tasman Bridge, eastern approaches (\$46M)

- Tasmania's highest volume road section
- Upgrades to improve access and safety on the eastern approaches to the Tasman Bridge
- Two stages:
  1. Focus on Lindisfarne entry/exit
  2. Resolve current merging arrangements, heading west from Rosny



# Tasman Highway – Tasman Bridge, eastern approaches (\$46M)

- Stage 1 and 2 improvements





# Tasman Highway – Holyman Avenue Roundabout (\$8M)

- Upgrade of Holyman Avenue roundabout to cater for higher traffic volumes and improved access



# Real Time Passenger Information (\$2.5M)

- Metro Greencard introduced in 2008.
- GPS-enabled ticketing system
- System records in real-time, but no mobile transmission
- RTPI will enhance information for both passengers and Metro
- Proposal includes fixed signage and mobile applications.
- BCR: 1.1



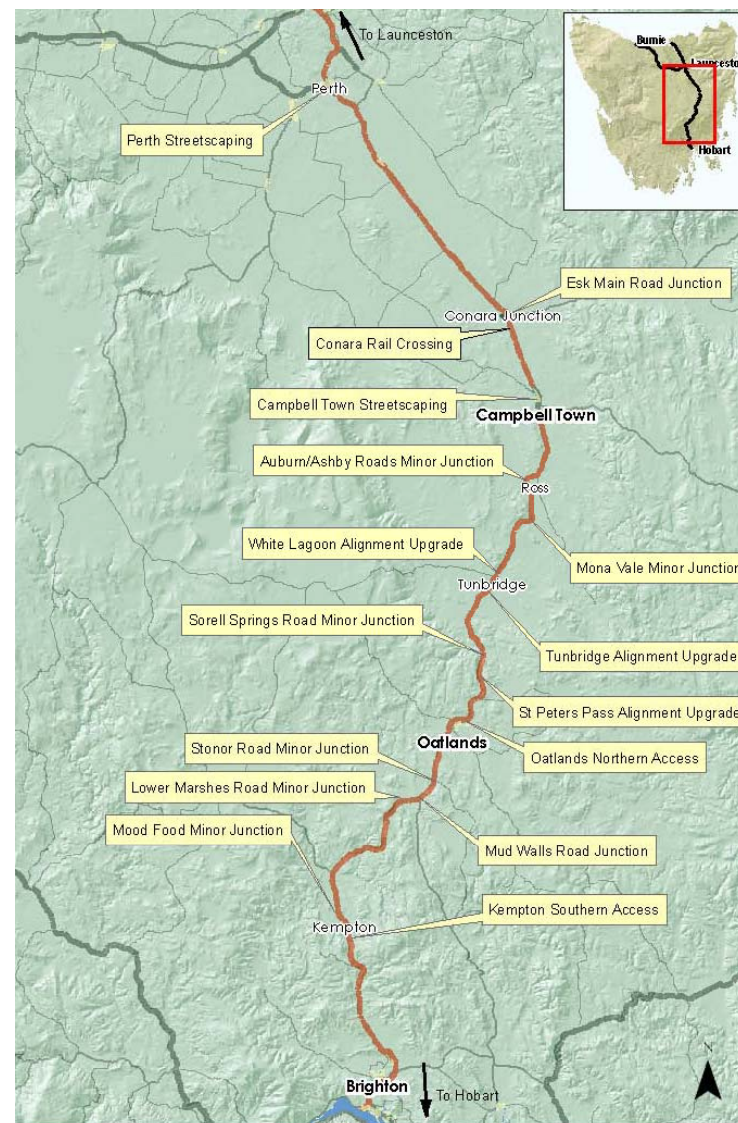
### 3. Safety (\$150M)

- Includes Black Spot, Roads to Recovery and Maintenance (road and rail)
- Narrow definition under NB2 – many safety-related projects submitted under other themes
- Two key projects:
  - Midland Highway Safety Package
  - Huon Highway-Summerleas Road upgrades



# Midland Highway Safety Package (\$128M)

- Series of targeted safety upgrades:
  - Major junctions: \$15.3M
  - Streetscaping: \$15.2M
  - Rail realignment, Conara: \$22M
  - Realignment/upgrades, key sections: \$32.3M
  - Minor junctions: \$42.9M
- Consistent with Midland Highway Partnership Agreement



# Huon Highway-Summerleas Road junction upgrade (\$22M)

- Grade-separation of key junction to improve safety



## 4. Innovation (\$35.7M)

- Includes 'smart infrastructure', planning and research:
- *Smart infrastructure*
  - Urban Intelligent Transport Systems, Hobart: extension of variable speed messaging to the Brooker Highway and Southern Outlet, SMS traveller information and improvements to traffic management systems (\$19M)
- *Planning*
  - Bass Highway (Latrobe to Deloraine) Planning: Identification of priority projects to improve efficiency and safety on the Highway between Latrobe and Deloraine (\$5M)
  - Domain Highway Planning: investigation of options to upgrade the Domain Highway Interchange and review opportunities to improve efficiency and safety on the Highway connecting to the Tasman Bridge (\$5M)



# Innovation (\$35.7M)

- *Planning cont.*
  - South Arm Highway Planning: investigation of infrastructure and non-infrastructure solutions to improve connectivity and modal choice on the South Arm Highway to Rokeby (\$5M)
  - Hobart Central Bus Interchange Design: planning and options development for a redesign of the existing Hobart Central Bus Interchange to address identified issues with the current design's amenity and its contribution to travel delays/unreliability in the broader system (\$1M)
- Research to guide investment:
  - Greater Hobart Household Travel Survey: undertake a second survey of Hobart households to track trips types and mode choices (\$350K)
  - Tasmanian Freight Model: development of a model to enable analysis of the impact of potential policy interventions on the freight network (\$350K)

## ‘Concept’ only projects

- Provided as part of Tasmania’s overall submission but in concept form only:
  - NB2 programs to which the projects relate, commence in 2013
  - Further work to undertake before full submission can be made
- Projects are:
  - *Macquarie Street Clearway*: Extension of existing Southern Outlet bus lane and peak-hour Macquarie Street clearway
  - *Latrobe to Devonport Cycleway*: Planning and delivery of a new active transport link between Latrobe and Devonport
  - *Sandy Bay Walking and Cycling project*: Staged development of a walking and cycling route from Marievile Esplanade south to municipal boundary at Cartwright Reserve.
  - *Launceston Passenger Transport Network Planning*: Progress key initiatives coming out of the Northern Integrated Transport Plan, Greater Launceston Passenger Transport Plan and Launceston traffic modelling projects.

## Next steps and further information

- Announcements in May as part of 2013/14 federal budget
- Funding commences 2014/15
- ‘Competitive sub-programs’:
  - Liveable Cities and Active Transport; Heavy Vehicle and Rail Freight Productivity; Pinch Points (low-cost congestion measures); Network Regeneration – Upgrade and Improvement (e.g. heavy vehicle rest areas, boom gates)
  - Annual funding allocation throughout NB2
  - Initial allocation likely to be announced May 2013
- ‘All submissions on DIER’s website:

[http://www.dier.tas.gov.au/publications/nation\\_building\\_2](http://www.dier.tas.gov.au/publications/nation_building_2)





Tasmania  
*Explore the possibilities*

*For further information, please contact:*

Di Gee

Director, Infrastructure Planning

Department of Infrastructure, Energy and Resources

[Di.Gee@dier.tas.gov.au](mailto:Di.Gee@dier.tas.gov.au)

6233 4867