
From: [out of scope]
Sent: Wednesday, 22 July 2020 11:52 AM
To: [out of scope]
Cc: [out of scope]
Subject: RE: Jefferys Track Feasibility Study - Update

Hi [out of scope]

Thanks for the update.

Happy to await further direct contact based on the context of your email.

Regards

[out of scope]
Network Planning Branch | State Roads Division
p: [out of scope]
www.stategrowth.tas.gov.au

[out of scope]

DEPARTMENT OF STATE GROWTH COURAGE TO MAKE A DIFFERENCE THROUGH:



CONFIDENTIALITY NOTICE AND DISCLAIMER

The information in this transmission may be confidential and/or protected by legal professional privilege, and is intended only for the person or persons to whom it is addressed. If you are not such a person, you are warned that any disclosure, copying or dissemination of the information is unauthorised. If you have received the transmission in error, please immediately contact this office by telephone, fax or email, to inform us of the error and to enable arrangements to be made for the destruction of the transmission, or its return at our cost. No liability is accepted for any unauthorised use of the information contained in this transmission.

From: [out of scope]
Sent: Wednesday, 22 July 2020 11:38 AM
To: [out of scope]
Cc: [out of scope]
Subject: RE: Jefferys Track Feasibility Study - Update

Hi [out of scope]

Just a quick update from our point of view – we are certainly going to be in touch with you [out of scope] regarding contact details for traffic information and other information we will require from DSG. I think our next catch up will be Deloitte – DSG rather than all parties.

We have been holding off a little as there have been some developments with the options and therefore scope of the project (mainly further discussion around the fact that an industry road via Jefferys Track does not appear to be feasible and implications for the project overall).

HVC and DVC media teams have been working together on the media release which has been reviewed by DSG, and expected to be released by the end of the week.

Happy to discuss further, and feel free to contact me any time – but there will be a more detailed email coming your way in the coming days.

Regards

out of scope

From: out of scope

Sent: Wednesday, 22 July 2020 10:47 AM

To: out of scope

Cc:

Subject: [EXT]Jefferys Track Feasibility Study - Update

Hi out of scope

Just following-up on the 1 July Teams meeting with you, the Mayors, Deloitte and GHD.

I had been expecting some feedback from Deloitte after the meeting, particularly in relation to providing contact details for traffic information (including modelling) that State Growth has available.

I'm also aware that a draft Media Release has been prepared by HVC and DVG, which is due for release shortly I believe(?).

Can you give me an update on the project and advise when our next virtual meeting is likely to be scheduled?

Regards

out of scope

Network Planning Branch | State Roads Division

p: out of scope

www.stategrowth.tas.gov.au

out of scope

DEPARTMENT OF STATE GROWTH COURAGE TO MAKE A DIFFERENCE THROUGH:



CONFIDENTIALITY NOTICE AND DISCLAIMER

The information in this transmission may be confidential and/or protected by legal professional privilege, and is intended only for the person or persons to whom it is addressed. If you are not such a person, you are warned that any disclosure, copying or dissemination of the information is unauthorised. If you have received the transmission in error, please immediately contact this office by telephone, fax or email, to inform us of the error and to enable arrangements to be made for the destruction of the transmission, or its return at our cost. No liability is accepted for any unauthorised use of the information contained in this transmission.

CONFIDENTIALITY NOTICE AND DISCLAIMER

The information in this transmission may be confidential and/or protected by legal professional privilege, and is intended only for the person or persons to whom it is addressed. If you are not such a person, you are warned that any disclosure, copying or dissemination of the information is unauthorised. If you have received the transmission in error, please immediately contact this office by telephone, fax or email, to inform us of the error and to enable arrangements to be made for the destruction of the transmission, or its return at our cost. No liability is accepted for any unauthorised use of the information contained in this transmission.

This e-mail and any attachments to it are confidential. You must not use, disclose or act on the e-mail if you are not the intended recipient. If you have received this e-mail in error, please let us know by contacting the sender and deleting the original e-mail. Liability limited by a scheme approved under Professional Standards Legislation. Deloitte refers to a Deloitte member firm, one of its related entities, or Deloitte Touche Tohmatsu Limited ("DTTL"). Each Deloitte member firm is a separate legal entity and a member of DTTL. DTTL does not provide services to clients. Please see www.deloitte.com/about to learn more.

Nothing in this e-mail, nor any related attachments or communications or services, have any capacity to bind any other entity under the 'Deloitte' network of member firms (including those operating in Australia).

Released under RTI

From: [out of scope]
Sent: Monday, 3 August 2020 9:36 AM
To: [out of scope]
Cc: [out of scope]
Subject: RE: Jefferys Track Feasibility Study - Update
Attachments: Media Release - Jefferys Track upgrade to undergo feasibility study andpdf

Hi [out of scope]

[out of scope]

I'll sound out our traffic information team regarding the modelling State Growth undertakes as indicated below. Crash statistics can be provided, although that would be a significant amount of data across all the roads listed. Lyell Highway, Brooker Highway, Davey Street, Southern Outlet and Huon Highway are all State Roads, while the Plenty Link Road (Southern Explorer route) is in multiple ownerships (Derwent Valley Council, Sustainable Timbers Tasmania and P&WS, with Lonnaveale Road being Huon Valley Council).

Regards

[out of scope]

Network Planning Branch | State Roads Division
p: [out of scope]
www.stategrowth.tas.gov.au

[out of scope]

DEPARTMENT OF STATE GROWTH COURAGE TO MAKE A DIFFERENCE THROUGH:



CONFIDENTIALITY NOTICE AND DISCLAIMER

The information in this transmission may be confidential and/or protected by legal professional privilege, and is intended only for the person or persons to whom it is addressed. If you are not such a person, you are warned that any disclosure, copying or dissemination of the information is unauthorised. If you have received the transmission in error, please immediately contact this office by telephone, fax or email, to inform us of the error and to enable arrangements to be made for the destruction of the transmission, or its return at our cost. No liability is accepted for any unauthorised use of the information contained in this transmission.

From: [out of scope]
Sent: Friday, 31 July 2020 1:50 PM
To: [out of scope]
Subject: RE: Jefferys Track Feasibility Study - Update

Hi [out of scope]

Would you and other relevant parties from DSG be available for a Teams meeting next week? Primarily DSG/Deloitte, although Tim (HVC Project Manager) might also attend. We're available Wednesday 5 August after 10.30; Thursday 6th after 12.30, or Friday before 11.30. The following week would also be fine if that works better for you.

We're anticipating HVC will have a draft report from the engineers by this point, so should be in a position to share some of the draft information about routes and costs with you.

I've pulled together a general list of information that we need for the study. I think the best thing would be to have a further discussion about what level of information is and isn't available, so that we can craft a more specific request if necessary. If you could identify the relevant people and invite them along that would be great.

- Traffic modelling
 - What traffic modelling do you conduct and what are you able to provide us? Eg number of trips, VHT, VKT, by type of vehicle – for Lyell Highway, Brooker Highway, Davey Street, Southern Outlet, Huon Highway, Plenty Link Road/Southern Explorer route.
 - How does your forecasting work in terms of frequency and does it factor in various population growth projections?
- Crash statistics and road ownership for these roads.
- What would be required for there to be an impact on Hobart traffic congestion?
- Is there other strategic work that we should take into account in the cost benefit analysis?

Not sure if you saw the final media release, but I've attached it here for your reference.

Happy to chat about any of this if its easier, or not clear.

Thanks

out of scope

From: out of scope
 Sent: Wednesday, 22 July 2020 11:52 AM
 To: out of scope
 Cc: out of scope
 Subject: [EXT]RE: Jefferys Track Feasibility Study - Update

Hi out of scope

Thanks for the update.

Happy to await further direct contact based on the context of your email.

Regards

out of scope

Network Planning Branch | State Roads Division
 p: out of scope
www.stategrowth.tas.gov.au

out of scope

DEPARTMENT OF STATE GROWTH COURAGE TO MAKE A DIFFERENCE THROUGH:



CONFIDENTIALITY NOTICE AND DISCLAIMER

The information in this transmission may be confidential and/or protected by legal professional privilege, and is intended only for the person or persons to whom it is addressed. If you are not such a person, you are warned that any disclosure, copying or dissemination of the information is unauthorised. If you have received the transmission in error, please immediately contact this office by telephone, fax or email, to inform us of the error and to enable arrangements to be made for the destruction of the transmission, or its return at our cost. No liability is accepted for any unauthorised use of the information contained in this transmission.

From: out of scope
 Sent: Wednesday, 22 July 2020 11:38 AM
 To: out of scope
 Cc: out of scope
 Subject: RE: Jefferys Track Feasibility Study - Update

Hi [out of scope]

Just a quick update from our point of view – we are certainly going to be in touch with you [out of scope] regarding contact details for traffic information and other information we will require from DSG. I think our next catch up will be Deloitte – DSG rather than all parties.

We have been holding off a little as there have been some developments with the options and therefore scope of the project (mainly further discussion around the fact that an industry road via Jefferys Track does not appear to be feasible and implications for the project overall).

HVC and DVC media teams have been working together on the media release which has been reviewed by DSG, and expected to be released by the end of the week.

Happy to discuss further, and feel free to contact me any time – but there will be a more detailed email coming your way in the coming days.

Regards

[out of scope]

From: [out of scope]

Sent: Wednesday, 22 July 2020 10:47 AM

To: [out of scope]

Cc:

Subject: [EXT]Jefferys Track Feasibility Study - Update

Hi [out of scope]

Just following-up on the 1 July Teams meeting with you, the Mayors, Deloitte and GHD.

I had been expecting some feedback from Deloitte after the meeting, particularly in relation to providing contact details for traffic information (including modelling) that State Growth has available.

I'm also aware that a draft Media Release has been prepared by HVC and DVC, which is due for release shortly I believe(?).

Can you give me an update on the project and advise when our next virtual meeting is likely to be scheduled?

Regards

[out of scope]

Network Planning Branch | State Roads Division

p: [out of scope]

www.stategrowth.tas.gov.au

[out of scope]

DEPARTMENT OF STATE GROWTH COURAGE TO MAKE A DIFFERENCE THROUGH:



CONFIDENTIALITY NOTICE AND DISCLAIMER

The information in this transmission may be confidential and/or protected by legal professional privilege, and is intended only for the person or persons to whom it is addressed. If you are not such a person, you are warned that

any disclosure, copying or dissemination of the information is unauthorised. If you have received the transmission in error, please immediately contact this office by telephone, fax or email, to inform us of the error and to enable arrangements to be made for the destruction of the transmission, or its return at our cost. No liability is accepted for any unauthorised use of the information contained in this transmission.

CONFIDENTIALITY NOTICE AND DISCLAIMER

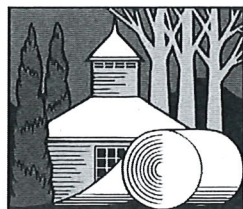
The information in this transmission may be confidential and/or protected by legal professional privilege, and is intended only for the person or persons to whom it is addressed. If you are not such a person, you are warned that any disclosure, copying or dissemination of the information is unauthorised. If you have received the transmission in error, please immediately contact this office by telephone, fax or email, to inform us of the error and to enable arrangements to be made for the destruction of the transmission, or its return at our cost. No liability is accepted for any unauthorised use of the information contained in this transmission.

This e-mail and any attachments to it are confidential. You must not use, disclose or act on the e-mail if you are not the intended recipient. If you have received this e-mail in error, please let us know by contacting the sender and deleting the original e-mail. Liability limited by a scheme approved under Professional Standards Legislation. Deloitte refers to a Deloitte member firm, one of its related entities, or Deloitte Touche Tohmatsu Limited ("DTTL"). Each Deloitte member firm is a separate legal entity and a member of DTTL. DTTL does not provide services to clients. Please see www.deloitte.com/about to learn more. Nothing in this e-mail, nor any related attachments or communications or services, have any capacity to bind any other entity under the 'Deloitte' network of member firms (including those operating in Australia).

CONFIDENTIALITY NOTICE AND DISCLAIMER

The information in this transmission may be confidential and/or protected by legal professional privilege, and is intended only for the person or persons to whom it is addressed. If you are not such a person, you are warned that any disclosure, copying or dissemination of the information is unauthorised. If you have received the transmission in error, please immediately contact this office by telephone, fax or email, to inform us of the error and to enable arrangements to be made for the destruction of the transmission, or its return at our cost. No liability is accepted for any unauthorised use of the information contained in this transmission.

This e-mail and any attachments to it are confidential. You must not use, disclose or act on the e-mail if you are not the intended recipient. If you have received this e-mail in error, please let us know by contacting the sender and deleting the original e-mail. Liability limited by a scheme approved under Professional Standards Legislation. Deloitte refers to a Deloitte member firm, one of its related entities, or Deloitte Touche Tohmatsu Limited ("DTTL"). Each Deloitte member firm is a separate legal entity and a member of DTTL. DTTL does not provide services to clients. Please see www.deloitte.com/about to learn more. Nothing in this e-mail, nor any related attachments or communications or services, have any capacity to bind any other entity under the 'Deloitte' network of member firms (including those operating in Australia).



MEDIA RELEASE

EMBARGOED 24 JULY 2020

Jefferys Track upgrade to undergo feasibility study and community consultation

The Tasmanian Government has funded a feasibility study for the upgrade of Jefferys Track, which runs from Crabtree in the Huon Valley area to Lachlan in the Derwent Valley. The feasibility study will be led by the Huon Valley Council in collaboration with the Derwent Valley Council.

A transport link between the Huon and Derwent Valleys has potential to bring significant business, leisure and social benefits for our communities. In addition, the current state of Jefferys Track is problematic as it is impassable in places. A decision needs to be made on whether to maintain or upgrade the route, and whether it is a viable option to link the Valleys.

Deloitte Access Economics has been engaged to undertake consultation with key stakeholders and to deliver a cost-benefit analysis of options for upgrading Jefferys Track. Engineers GHD have also been engaged to identify and provide cost estimates of options for possible routes and road types.

Community and industry consultation will take place in the second half of 2020. The aim of the consultation is to:

- Communicate and seek feedback on the possibility of development of Jefferys Track
- Understand community and industry opinions, concerns and ideas related to the possibility of development of the track
- Ascertain potential traffic flows
- Identify the costs and benefits of the potential development

Following some initial industry consultation, local communities will be invited to have input. Consultation for both stakeholder groups will include a series of interviews, workshops, public meetings, and an online survey.

Derwent Valley Mayor Ben Shaw said that Derwent Valley Council supports the feasibility study with a strong focus on the consultation process.



DERWENT VALLEY COUNCIL

"It would be fantastic to have better and easier access and a connection between the Huon and Derwent Valleys but we must make sure the industry stakeholders and communities at both ends are well-informed and have the opportunity for feedback and input along the way.

"It's really exciting to imagine what could possibly be achieved, but if anything is to come of it, it's vital that it's done in a careful and considered way," he said.

If you wish to be part of the consultation please contact Deloitte Access Economics on (03) 9667 5040 or jefferystrackconsult@deloitte.com.au to register your interest. Opportunities will also be communicated through the usual council channels.

"The consultation is an important opportunity to listen what our communities say about the proposed upgrade, and to find out what the key issues are," said Huon Valley Council Acting Mayor Sally Doyle. "Councillors will consider the results of the consultation together with all aspects of the potential upgrade which will be covered in the feasibility study, such as construction costs and routes, and impacts on adjoining landowners.

"Access to Jefferys Track involves travelling through Crabtree, which has many residential and farming properties. Increased traffic is a concern that will be addressed in the study and will be an important consideration for both Councils.

"We thank the Tasmanian Government for funding the study and providing us with the opportunity to thoroughly investigate potential options for track."

At this stage, no decisions have been made about the future of Jefferys Track. If the feasibility assessment is positive and both Councils agree to proceed with the upgrade, the next steps will involve more community consultation and the completion of a detailed route analysis and environmental studies.

For more information: Acting Mayor Sally Doyle (03) 6264 0300

From: [redacted] out of scope
Sent: Tuesday, 11 August 2020 6:38 PM
To: [redacted] out of scope
Subject: RE:Jefferys Track Feasibility Study - Traffic counts

Thanks [redacted] out of scope that's great.

[redacted] out of scope

From: [redacted] out of scope
Sent: Tuesday, 11 August 2020 12:21 PM
To: [redacted] out of scope
Subject: [EXT]RE: Jefferys Track Feasibility Study - Traffic counts

Hi [redacted] out of scope

Forgot to include the traffic data for the Huon Highway that I mentioned.

A0168 (190m N of Lollara MR) (L17/ 0.00 -L26/ 5 12)

A0168 (910m W of Leslie Vale Road) (L6/1 62)

AADT by month

AADT for year – 10097

% trucks – 10.5

month	AADT
2019-01	10474
2019-02	10541
2019-03	10905
2019-04	9938
2019-05	9958
2019-06	9534
2019-07	9585
2019-08	9554
2019-09	9810
2019-10	9999
2019-11	10559
2019-12	10301

AADT by month

AADT for year – 1

% trucks – 9.6

month	AADT
2019-01	10007
2019-02	9741
2019-03	9803
2019-04	10101
2019-05	10509
2019-06	10122
2019-07	10072
2019-08	10110
2019-09	10371
2019-10	10472
2019-11	11251
2019-12	10884

Cheers

[redacted] out of scope

Network Planning Branch | State Roads Division
p: [redacted] out of scope
www.stategrowth.tas.gov.au

[redacted] out of scope

DEPARTMENT OF STATE GROWTH COURAGE TO MAKE A DIFFERENCE THROUGH:



CONFIDENTIALITY NOTICE AND DISCLAIMER

The information in this transmission may be confidential and/or protected by legal professional privilege, and is intended only for the person or persons to whom it is addressed. If you are not such a person, you are warned that any disclosure, copying or dissemination of the information is unauthorised. If you have received the transmission in error, please immediately contact this office by telephone, fax or email, to inform us of the error and to enable

arrangements to be made for the destruction of the transmission, or its return at our cost. No liability is accepted for any unauthorised use of the information contained in this transmission.

From: [redacted] out of scope
Sent: Tuesday, 11 August 2020 11:57 AM
To: [redacted] out of scope
Subject: RE: Jefferys Track Feasibility Study - Freight surveys

Hi Emily,

Thanks for the Teams get together this morning, interesting numbers mentioned.

The freight information and reports available on our website are at https://www.stategrowth.tas.gov.au/infrastructure_tasmania/freight/data/tasmanian_freight_survey2 and https://www.stategrowth.tas.gov.au/policies_and_strategies/burnie_to_hobart_freight_corridor_strategy.

I've requested the crash data and you should get an email in the near future [redacted] out of scope. I'll send another email shortly regarding the modelling with [redacted] out of scope contact details.

Regards

[redacted] out of scope
Network Planning Branch | State Roads Division
p: [redacted] out of scope
www.stategrowth.tas.gov.au

[redacted] out of scope

DEPARTMENT OF STATE GROWTH COURAGE TO MAKE A DIFFERENCE THROUGH



CONFIDENTIALITY NOTICE AND DISCLAIMER

The information in this transmission may be confidential and/or protected by legal professional privilege, and is intended only for the person or persons to whom it is addressed. If you are not such a person, you are warned that any disclosure, copying or dissemination of the information is unauthorised. If you have received the transmission in error, please immediately contact this office by telephone, fax or email, to inform us of the error and to enable arrangements to be made for the destruction of the transmission, or its return at our cost. No liability is accepted for any unauthorised use of the information contained in this transmission.

From: [redacted] out of scope
Sent: Friday, 31 July 2020 1:50 PM
To: [redacted] out of scope
Subject: RE: Jefferys Track Feasibility Study - Update

Hi [redacted] out of scope

Would you and other relevant parties from DSG be available for a Teams meeting next week? Primarily DSG/Deloitte, although Tim (HVC Project Manager) might also attend. We're available Wednesday 5 August after 10.30; Thursday 6th after 12.30, or Friday before 11.30. The following week would also be fine if that works better for you.

We're anticipating HVC will have a draft report from the engineers by this point, so should be in a position to share some of the draft information about routes and costs with you.

I've pulled together a general list of information that we need for the study. I think the best thing would be to have a further discussion about what level of information is and isn't available, so that we can craft a more specific request if necessary. If you could identify the relevant people and invite them along that would be great.

- Traffic modelling
 - What traffic modelling do you conduct and what are you able to provide us? Eg number of trips, VHT, VKT, by type of vehicle – for Lyell Highway, Brooker Highway, Davey Street, Southern Outlet, Huon Highway, Plenty Link Road/Southern Explorer route.

- How does your forecasting work in terms of frequency and does it factor in various population growth projections?
- Crash statistics and road ownership for these roads.
- What would be required for there to be an impact on Hobart traffic congestion?
- Is there other strategic work that we should take into account in the cost benefit analysis?

Not sure if you saw the final media release, but I've attached it here for your reference.

Happy to chat about any of this if its easier, or not clear.

Thanks

out of scope

From: out of scope

Sent: Wednesday, 22 July 2020 11:52 AM

To: out of scope

Cc:

Subject: [EXT]RE: Jefferys Track Feasibility Study - Update

Hi out of scope

Thanks for the update.

Happy to await further direct contact based on the context of your email.

Regards

out of scope

Network Planning Branch | State Roads Division

p: out of scope

www.stategrowth.tas.gov.au

out of scope

DEPARTMENT OF STATE GROWTH COURAGE TO MAKE A DIFFERENCE THROUGH:



CONFIDENTIALITY NOTICE AND DISCLAIMER

The information in this transmission may be confidential and/or protected by legal professional privilege, and is intended only for the person or persons to whom it is addressed. If you are not such a person, you are warned that any disclosure, copying or dissemination of the information is unauthorised. If you have received the transmission in error, please immediately contact this office by telephone, fax or email, to inform us of the error and to enable arrangements to be made for the destruction of the transmission, or its return at our cost. No liability is accepted for any unauthorised use of the information contained in this transmission.

From: out of scope

Sent: Wednesday, 22 July 2020 11:38 AM

To: out of scope

Cc:

Subject: RE:Jefferys Track Feasibility Study - Update

Hi out of scope

Just a quick update from our point of view – we are certainly going to be in touch with you **out of scope** regarding contact details for traffic information and other information we will require from DSG. I think our next catch up will be Deloitte – DSG rather than all parties.

We have been holding off a little as there have been some developments with the options and therefore scope of the project (mainly further discussion around the fact that an industry road via Jefferys Track does not appear to be feasible and implications for the project overall).

HVC and DVC media teams have been working together on the media release which has been reviewed by DSG, and expected to be released by the end of the week.

Happy to discuss further, and feel free to contact me any time – but there will be a more detailed email coming your way in the coming days.

Regards

out of scope

From: **out of scope**
Sent: Wednesday, 22 July 2020 10:47 AM
To: **out of scope**
Cc: **out of scope**
Subject: [EXT]Jefferys Track Feasibility Study - Update

Hi **out of scope**

Just following-up on the 1 July Teams meeting with you, the Mayors, Deloitte and GHD.

I had been expecting some feedback from Deloitte after the meeting, particularly in relation to providing contact details for traffic information (including modelling) that State Growth has available.

I'm also aware that a draft Media Release has been prepared by HVC and DVC, which is due for release shortly I believe(?).

Can you give me an update on the project and advise when our next virtual meeting is likely to be scheduled?

Regards

out of scope

Network Planning Branch | State Roads Division
p: **out of scope**
www.stategrowth.tas.gov.au

out of scope

DEPARTMENT OF STATE GROWTH COURAGE TO MAKE A DIFFERENCE THROUGH:



CONFIDENTIALITY NOTICE AND DISCLAIMER

The information in this transmission may be confidential and/or protected by legal professional privilege, and is intended only for the person or persons to whom it is addressed. If you are not such a person, you are warned that any disclosure, copying or dissemination of the information is unauthorised. If you have received the transmission in error, please immediately contact this office by telephone, fax or email, to inform us of the error and to enable

arrangements to be made for the destruction of the transmission, or its return at our cost. No liability is accepted for any unauthorised use of the information contained in this transmission.

CONFIDENTIALITY NOTICE AND DISCLAIMER

The information in this transmission may be confidential and/or protected by legal professional privilege, and is intended only for the person or persons to whom it is addressed. If you are not such a person, you are warned that any disclosure, copying or dissemination of the information is unauthorised. If you have received the transmission in error, please immediately contact this office by telephone, fax or email, to inform us of the error and to enable arrangements to be made for the destruction of the transmission, or its return at our cost. No liability is accepted for any unauthorised use of the information contained in this transmission.

This e-mail and any attachments to it are confidential. You must not use, disclose or act on the e-mail if you are not the intended recipient. If you have received this e-mail in error, please let us know by contacting the sender and deleting the original e-mail. Liability limited by a scheme approved under Professional Standards Legislation. Deloitte refers to a Deloitte member firm, one of its related entities, or Deloitte Touche Tohmatsu Limited ("DTTL"). Each Deloitte member firm is a separate legal entity and a member of DTTL. DTTL does not provide services to clients. Please see www.deloitte.com/about to learn more. Nothing in this e-mail, nor any related attachments or communications or services, have any capacity to bind any other entity under the 'Deloitte' network of member firms (including those operating in Australia).

CONFIDENTIALITY NOTICE AND DISCLAIMER

The information in this transmission may be confidential and/or protected by legal professional privilege, and is intended only for the person or persons to whom it is addressed. If you are not such a person, you are warned that any disclosure, copying or dissemination of the information is unauthorised. If you have received the transmission in error, please immediately contact this office by telephone, fax or email, to inform us of the error and to enable arrangements to be made for the destruction of the transmission, or its return at our cost. No liability is accepted for any unauthorised use of the information contained in this transmission.

This e-mail and any attachments to it are confidential. You must not use, disclose or act on the e-mail if you are not the intended recipient. If you have received this e-mail in error, please let us know by contacting the sender and deleting the original e-mail. Liability limited by a scheme approved under Professional Standards Legislation. Deloitte refers to a Deloitte member firm, one of its related entities, or Deloitte Touche Tohmatsu Limited ("DTTL"). Each Deloitte member firm is a separate legal entity and a member of DTTL. DTTL does not provide services to clients. Please see www.deloitte.com/about to learn more. Nothing in this e-mail, nor any related attachments or communications or services, have any capacity to bind any other entity under the 'Deloitte' network of member firms (including those operating in Australia).

CONFIDENTIALITY NOTICE AND DISCLAIMER

The information in this transmission may be confidential and/or protected by legal professional privilege, and is intended only for the person or persons to whom it is addressed. If you are not such a person, you are warned that any disclosure, copying or dissemination of the information is unauthorised. If you have received the transmission in error, please immediately contact this office by telephone, fax or email, to inform us of the error and to enable arrangements to be made for the destruction of the transmission, or its return at our cost. No liability is accepted for any unauthorised use of the information contained in this transmission.

This e-mail and any attachments to it are confidential. You must not use, disclose or act on the e-mail if you are not the intended recipient. If you have received this e-mail in error, please let us know by contacting the sender and deleting the original e-mail. Liability limited by a scheme approved under Professional Standards Legislation. Deloitte refers to a Deloitte member firm, one of its related entities, or Deloitte Touche Tohmatsu Limited ("DTTL"). Each Deloitte member firm is a separate legal entity and a member of DTTL. DTTL does not provide services to clients. Please see www.deloitte.com/about to learn more. Nothing in this e-mail, nor any related attachments or communications or services, have any capacity to bind any other entity under the 'Deloitte' network of member firms (including those operating in Australia).

From: [redacted] out of scope
Sent: Tuesday, 18 August 2020 1:38 PM
To: [redacted] out of scope
Cc: [redacted]
Subject: RE:Jefferys Track Feasibility Study - Modelling

Thanks [redacted] out of scope much appreciated.

We're pretty focussed on the community and industry consultation parts of the project for the next week or so – but no doubt will be in touch after that about the details here.

Regards

[redacted] out of scope

From: [redacted] out of scope
Sent: Tuesday, 18 August 2020 1:28 PM
To: [redacted] out of scope
Cc: [redacted]
Subject: [EXT]Jefferys Track Feasibility Study - Modelling

Hi Emily,

Further to our discussions last week, as advised while we could build the road in the model and it would process it, the outputs would be indicative at best but more likely misleading.

State Road's data analyst, [redacted] out of scope provided me with the advice below earlier this month. [redacted] out of scope is happy for you to take his advice and is comfortable with you contacting him directly to gain a better understanding of the modelling that we might be able to provide. [redacted] out of scope can also provide information regarding travel times.

Regards

[redacted] out of scope

Network Planning Branch | State Roads Division

p: [redacted] out of scope

www.stategrowth.tas.gov.au

DEPARTMENT OF STATE GROWTH COURAGE TO MAKE A DIFFERENCE THROUGH:



CONFIDENTIALITY NOTICE AND DISCLAIMER

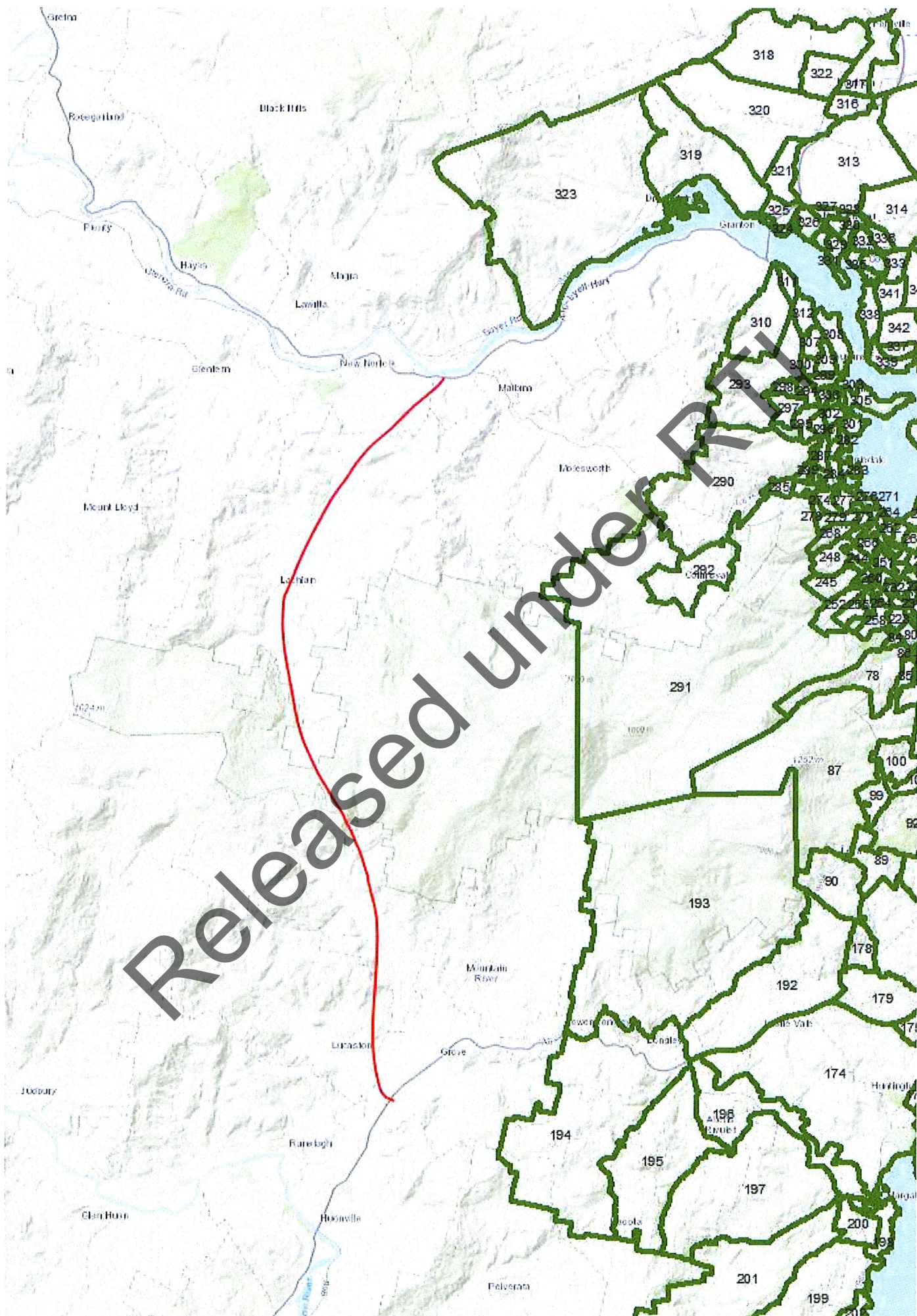
The information in this transmission may be confidential and/or protected by legal professional privilege, and is intended only for the person or persons to whom it is addressed. If you are not such a person, you are warned that any disclosure, copying or dissemination of the information is unauthorised. If you have received the transmission in error, please immediately contact this office by telephone, fax or email, to inform us of the error and to enable arrangements to be made for the destruction of the transmission, or its return at our cost. No liability is accepted for any unauthorised use of the information contained in this transmission.

From: [redacted] out of scope
Sent: Tuesday, 4 August 2020 3:56 PM
To: [redacted] out of scope
Cc: [redacted]
Subject: RE: Jefferys Track Feasibility Study - Update

Hi **out of scope**

My understanding of Jeffries Track is that it follows an alignment somewhere in the vicinity of the red line I've drawn below:

Released under RTI

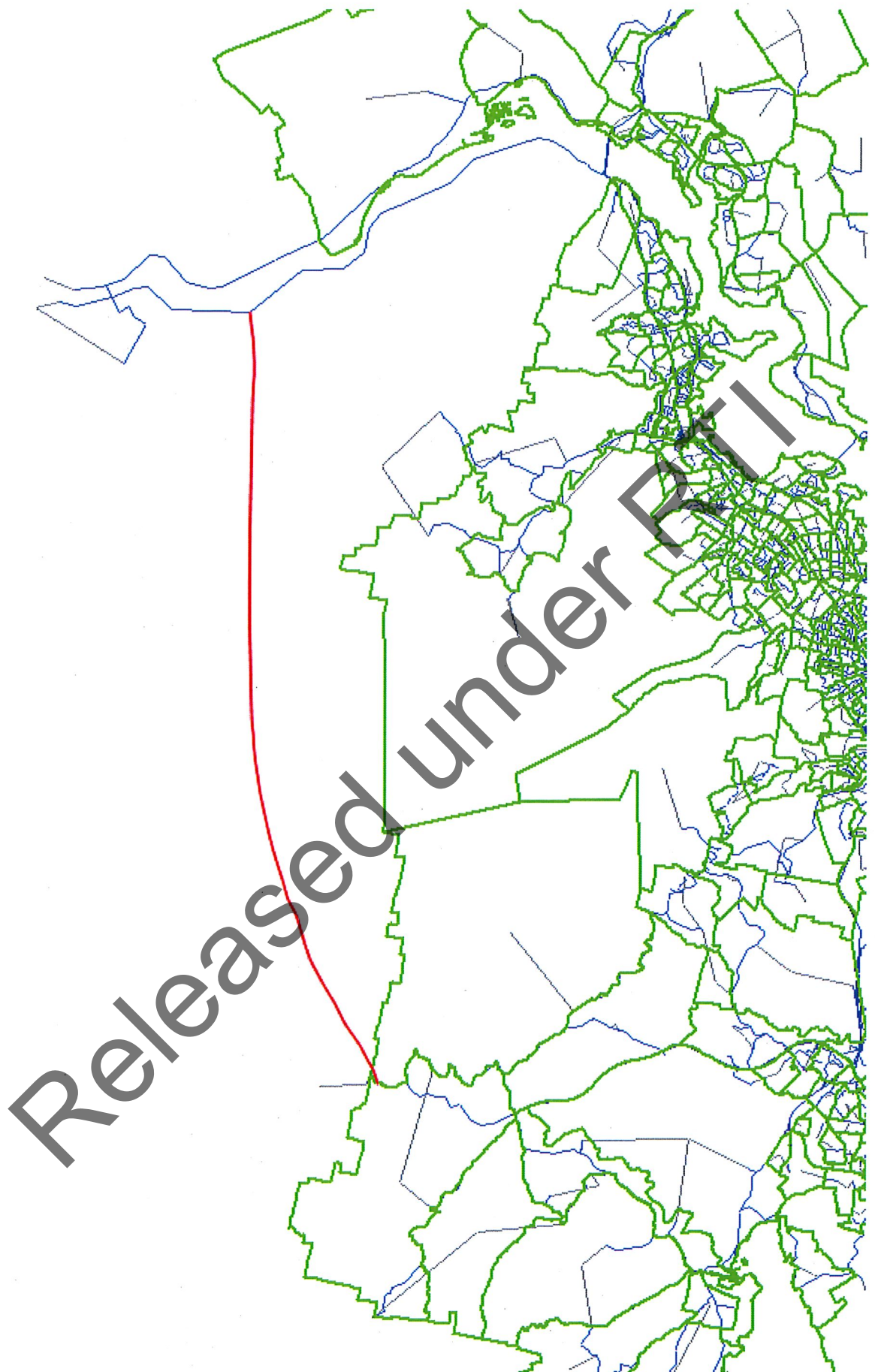


The Greater Hobart Urban Travel Demand Model operates within the extents of the green areas outlined in the drawing above.

As you can see, this new bypass alignment would be outside the extents of the model. We can only give the modelling statistics requested within the model bounds.

It could be possible to add the bypass in to see its effects (something like the red line below), but I don't know that the model calibrates particularly well at the New Norfolk end (it's out of the model bounds so we haven't specifically calibrated it).

Released under RTI



The other point to make is that the module that deals with freight/ commercial vehicles in the model is relatively simplistic. I'd have to look into it a bit further, but I'm not sure how well it would perform at looking at any specific changes/ benefits for a freight bypass.

The question "What would be required for there to be an impact on Hobart traffic congestion?" is very open and I'm not sure exactly the type of answer they're after here?

out of scope

Network Planning | Network Management Branch
State Roads Division | Department of State Growth
www.transport.tas.gov.au

P:

out of scope

CONFIDENTIALITY NOTICE AND DISCLAIMER

The information in this transmission may be confidential and/or protected by legal professional privilege, and is intended only for the person or persons to whom it is addressed. If you are not such a person, you are warned that any disclosure, copying or dissemination of the information is unauthorised. If you have received the transmission in error, please immediately contact this office by telephone, fax or email, to inform us of the error and to enable arrangements to be made for the destruction of the transmission, or its return at our cost. No liability is accepted for any unauthorised use of the information contained in this transmission.

This e-mail and any attachments to it are confidential. You must not use, disclose or act on the e-mail if you are not the intended recipient. If you have received this e-mail in error, please let us know by contacting the sender and deleting the original e-mail. Liability limited by a scheme approved under Professional Standards Legislation. Deloitte refers to a Deloitte member firm, one of its related entities, or Deloitte Touche Tohmatsu Limited ("DTTL"). Each Deloitte member firm is a separate legal entity and a member of DTTL. DTTL does not provide services to clients. Please see www.deloitte.com/about to learn more. Nothing in this e-mail, nor any related attachments or communications or services, have any capacity to bind any other entity under the 'Deloitte' network of member firms (including those operating in Australia).

Released under RTI

From: [redacted] out of scope
Sent: Wednesday, 19 August 2020 2:17 PM
To: [redacted] out of scope
Cc: [redacted]
Subject: Jeffery's Track - Crash Data Request
Attachments: Jefferys Track Feasibility Study - Crash Data - 2009-2020-.xlsx

Hi [redacted] out of scope

[redacted] out of scope has requested, on your behalf, crash data relating to the project looking at the feasibility of upgrading Jeffery's Track

The data covers the 10-year period from 2009 and includes all crashes recorded on the roads highlighted in the map below.



I trust this will assist in your study. Please let me know if you require any additional information.

Regards,

[redacted] out of scope

Department of State Growth
4 Salamanca Place, Hobart TAS 7000 | GPO Box 536 Hobart TAS 7001
ph [redacted] out of scope
www.stategrowth.tas.gov.au

From: [redacted] out of scope
Sent: Tuesday, 25 August 2020 2:46 PM
To: [redacted] out of scope
Cc: [redacted] State Roads Media
Subject: Jeffery's Track update

Hi [redacted] out of scope

Thanks for getting in touch with us re: the media release. It's fine to go out from our perspective.

Regarding your question about how to handle future media enquiries/releases, we suggest the following:

In general where Government has funded a third party through a grant deed to deliver a project, there is a fairly clear distinction about who answers what (noting that Government would expect to be kept in the loop with media – particularly anything proactive, to ensure a no surprises approach).

Any questions relating to the funding or why Government has provided that funding would be referred to Government.

Any questions about the project that Council is delivering (including the specific operational detail of it, and anything related to consultants or contractors that Council has engaged) would be responded by Council, but we would expect to receive for awareness.

Any response that refers to the Government or Department and / or of a strategic nature needs to be provided to us in advance for fact checking and alignment with Govt messaging.

So, for something like today's release, we would have no problem if you handle it and simply keep us in the loop.

Feel free to get back to me if you want to discuss further.

Regards

[redacted] out of scope

Stakeholder Communications Branch | State Roads | Department of State Growth
Parliament Square, 4 Salamanca Place, Hobart | GPO Box 536, Hobart TAS 7001
Phone: [redacted] out of scope www.stategrowth.tas.gov.au